

Schiebefalttor
Alu AL602SF
Alu therm. getrennt AL603SF
Stahl ST602SF

BR600

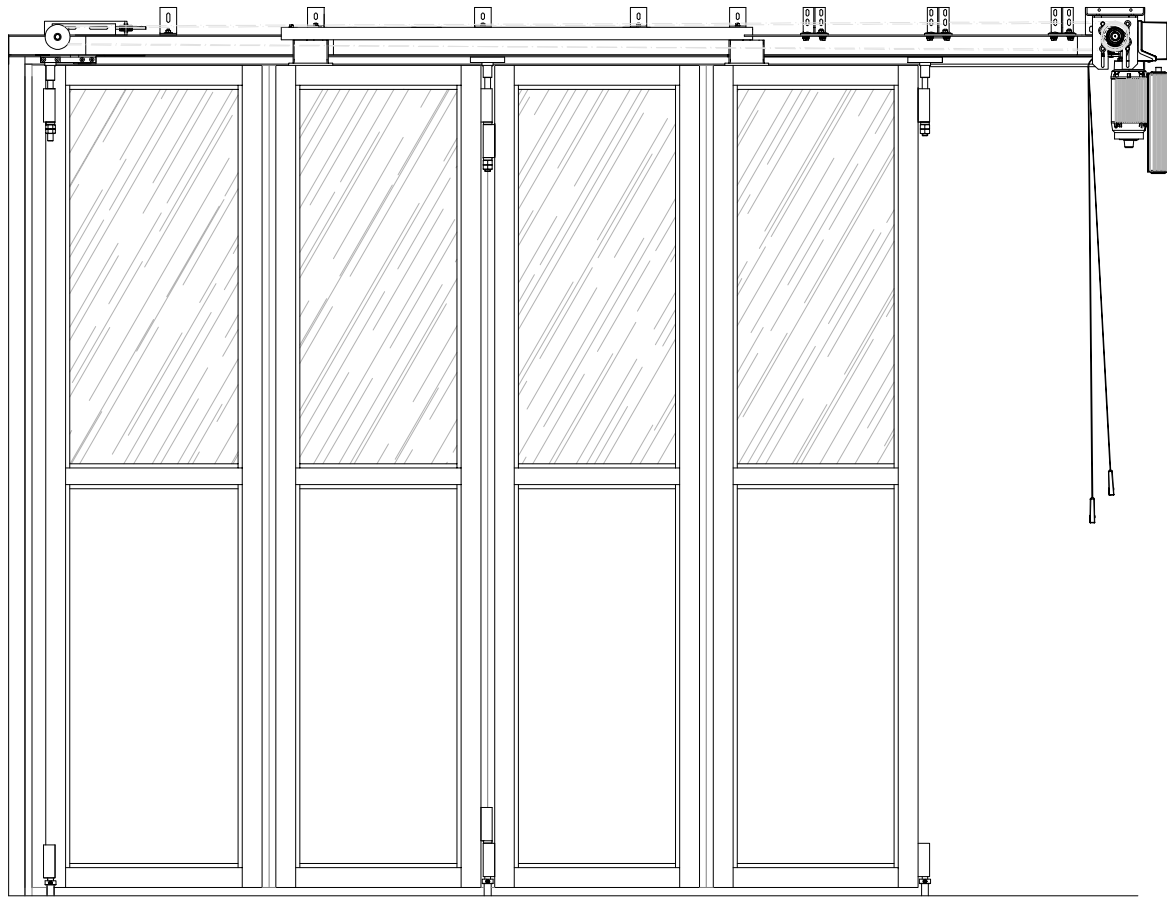
T E C H N I K
Version 2023/08

SCHNEIDER Torsysteme Ges.m.b.H.
Kalzitstrasse 1
A-4611 Buchkirchen
Tel. +43 7243/545 88-0
Fax. +43 7243/545 88-6
Web. www.schneider.co.at



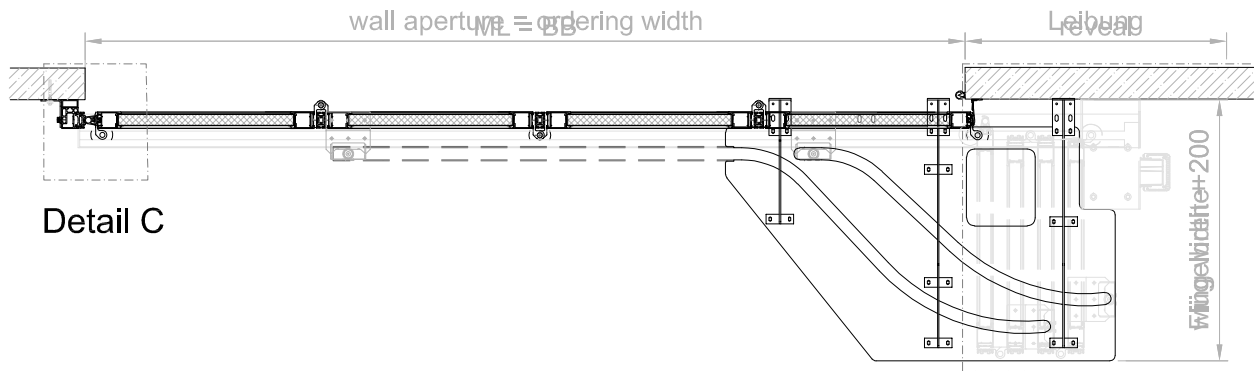
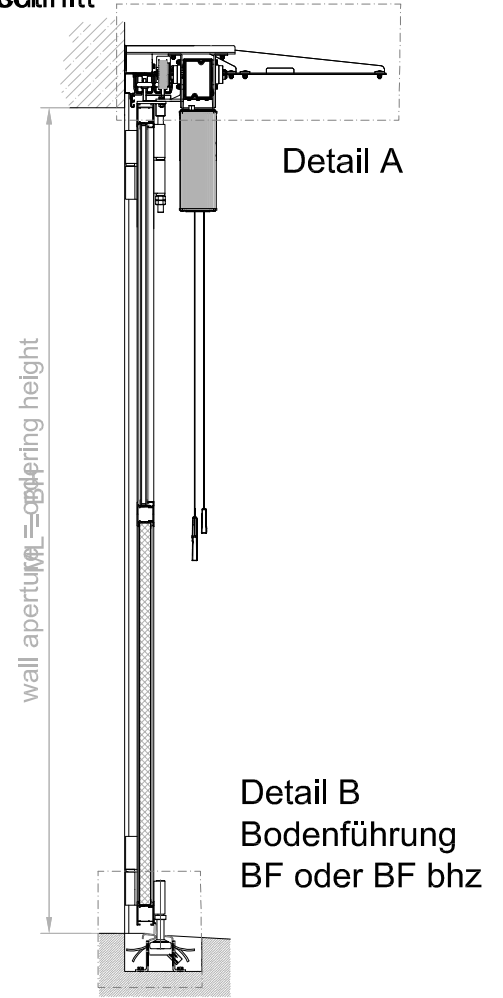
Gültig ab 01.08.2023

Alle bisherigen Unterlagen verlieren ihre Gültigkeit. Technische Änderungen, Druck- und Satzfehler, drucktechnische Farbabweichungen vorbehalten. Darstellungen sind nur beispielhaft.



Horizontalschnitt

Vertikalschnitt

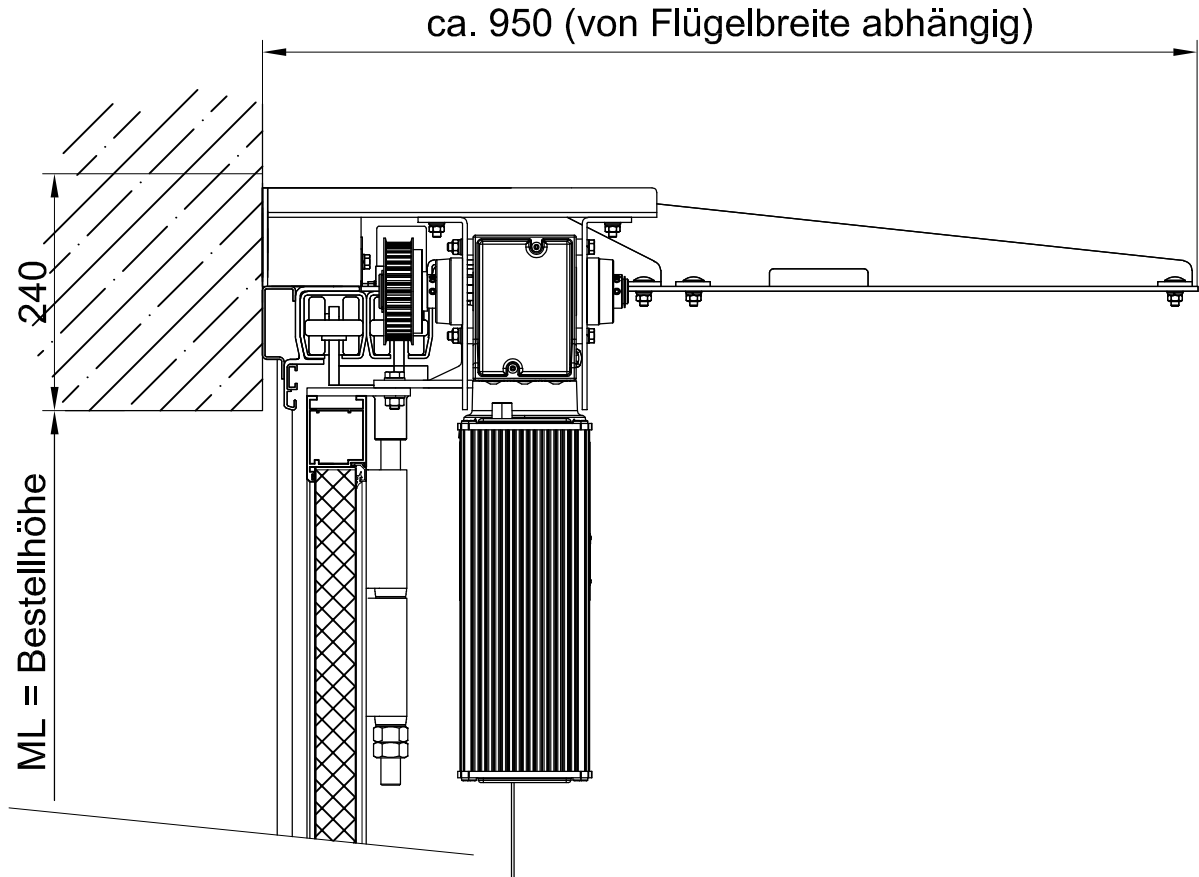


Schiebefalttor		Flügelberechnung BB/1300mm		
Profil	AL602SF	AL603SF	ST602SF	
Flügelanordnung pro Seite	0/2/4/6	0/2/4/6	0/2/4/6	
max. Flügelhöhe	5600mm	5600mm	7000mm	
max. Flügelbreite	1300mm	1300mm	1300mm	

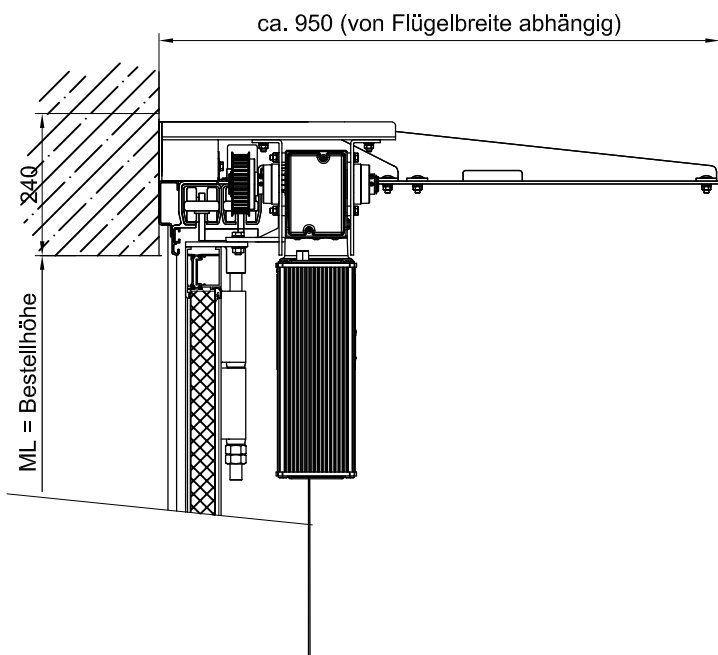
Systemzeichnung Schiebefalttor AL602SF AL603SF ST602SF

Systemzeichnung Schiebefalttor Vertikalschnitt - Detail A

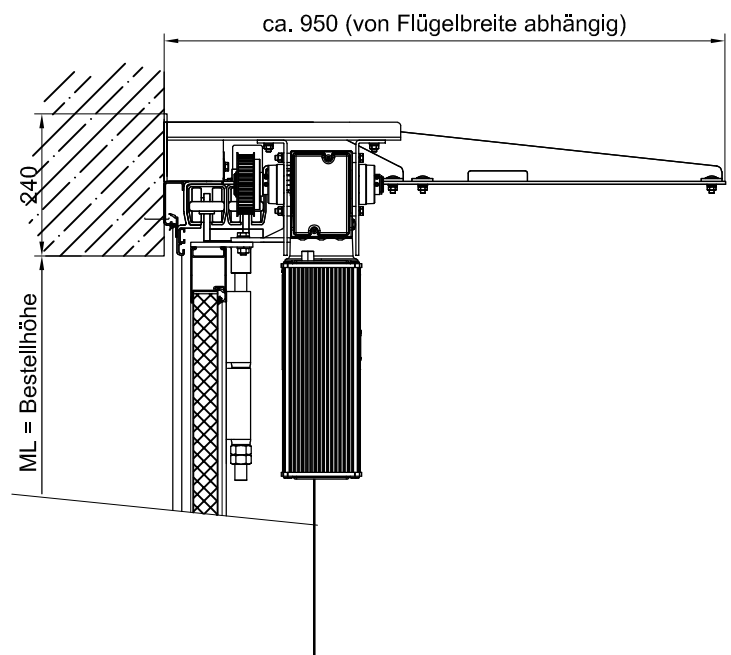
AL602SF



AL603SF

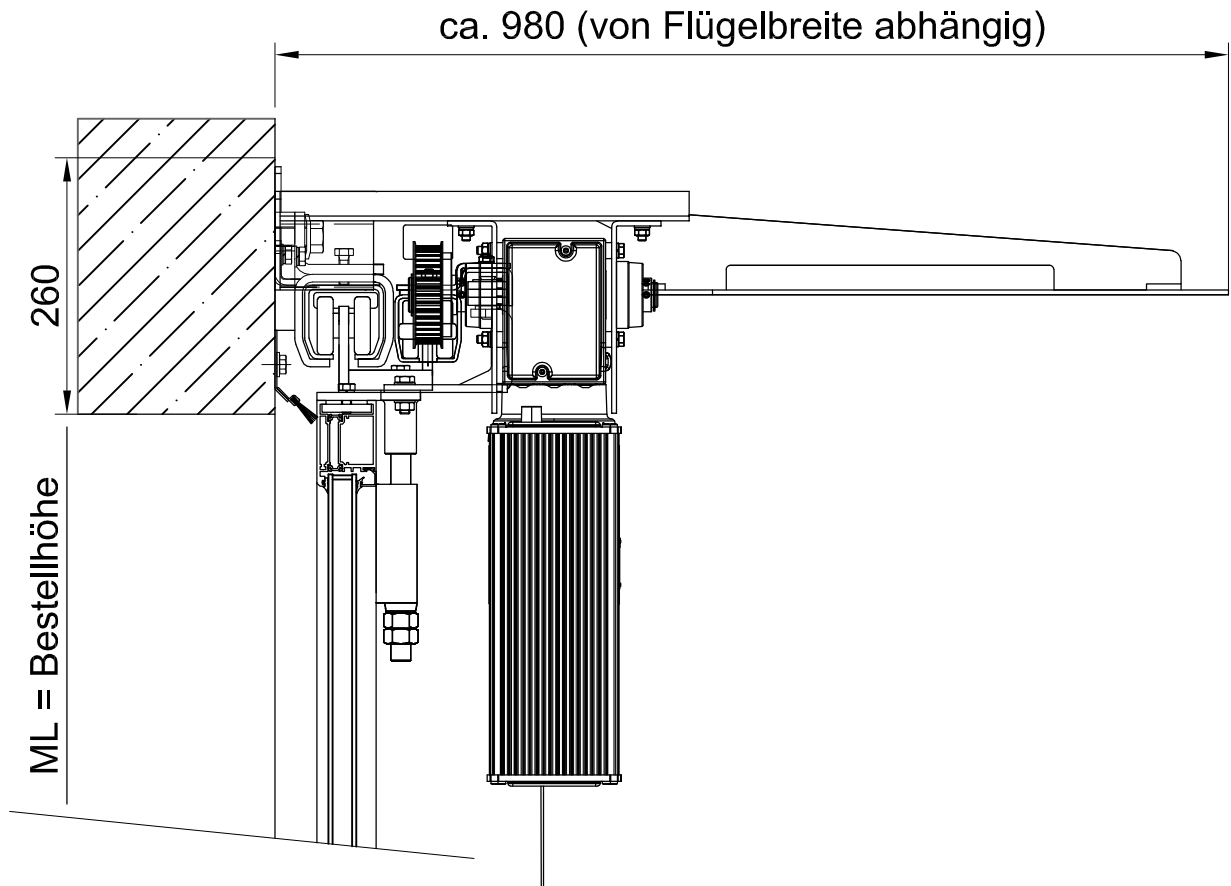


ST602SF



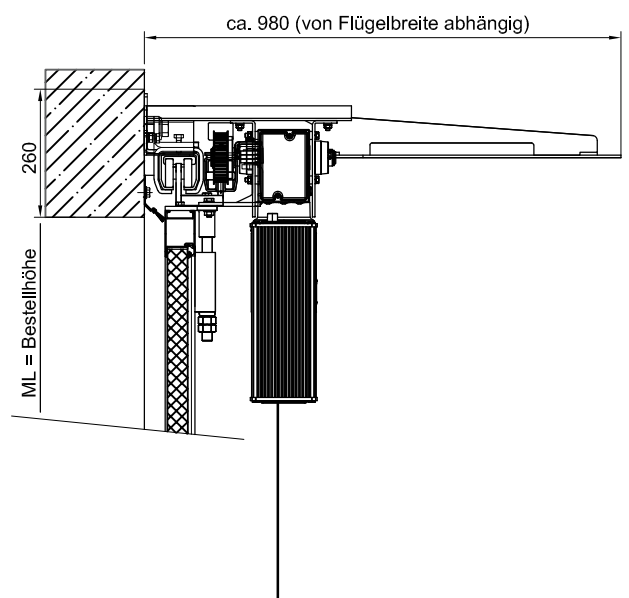
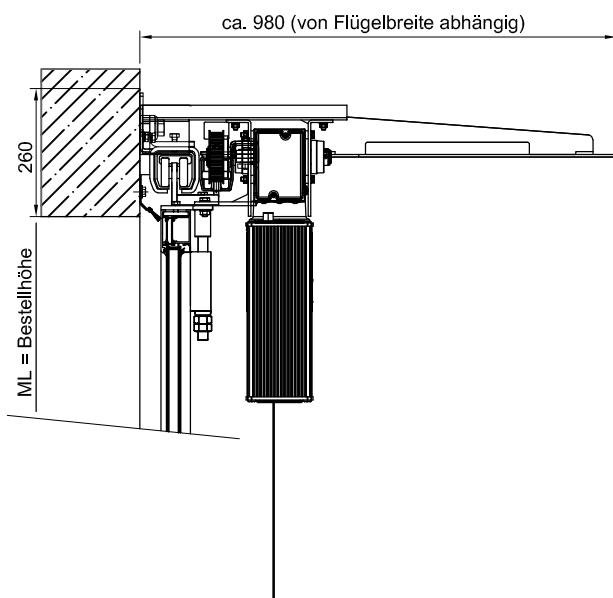
Systemzeichnung Schiebefalttor Laufschiene verstärkt Vertikalschnitt - Detail A

AL602SF



AL603SF

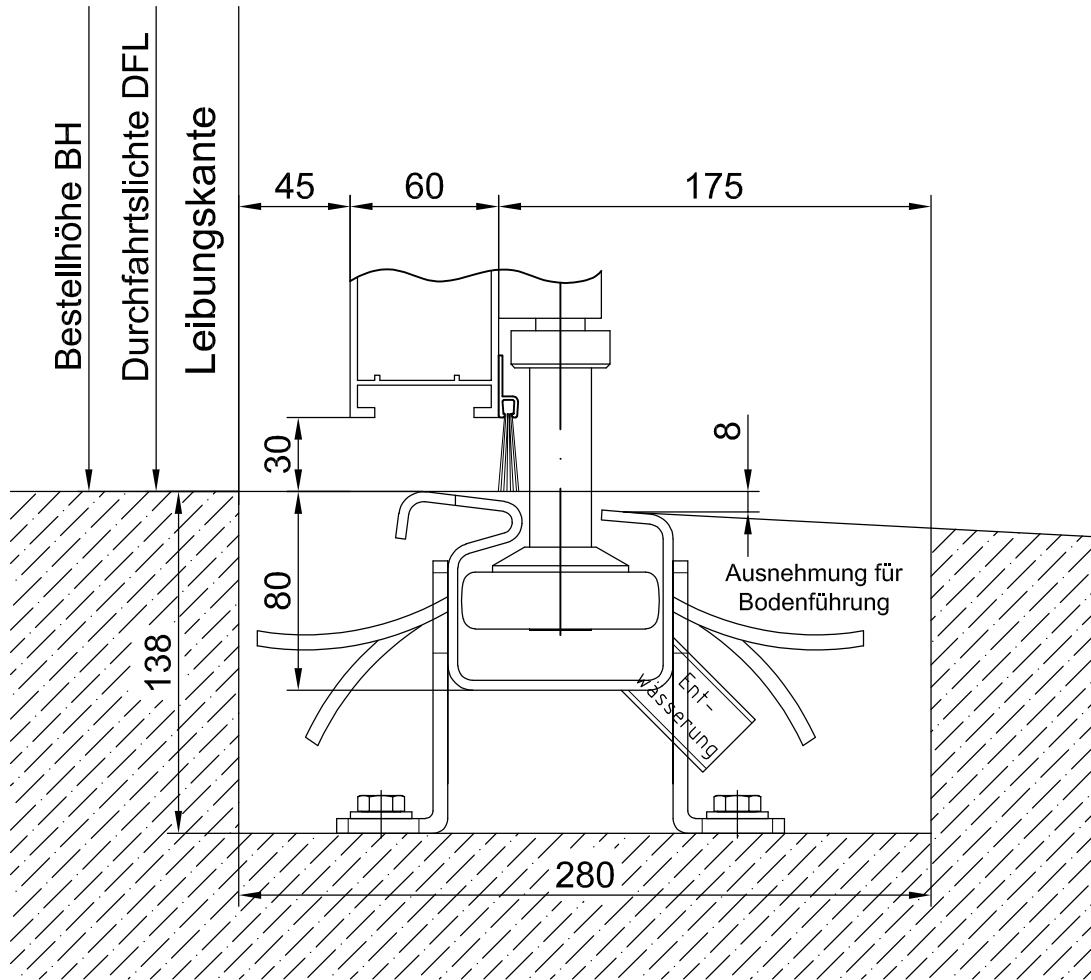
ST602SF



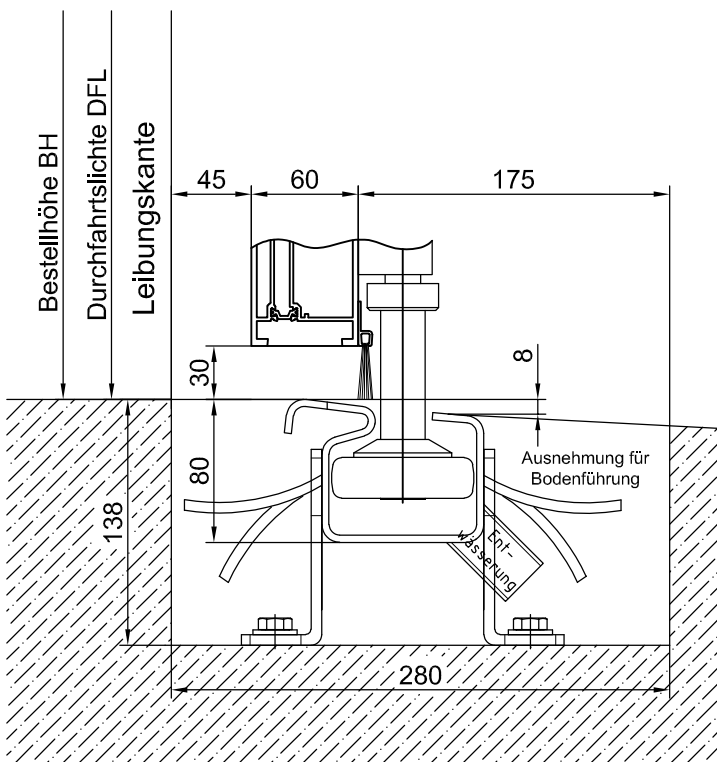
Bodenführung BF

Vertikalschnitt - Detail B

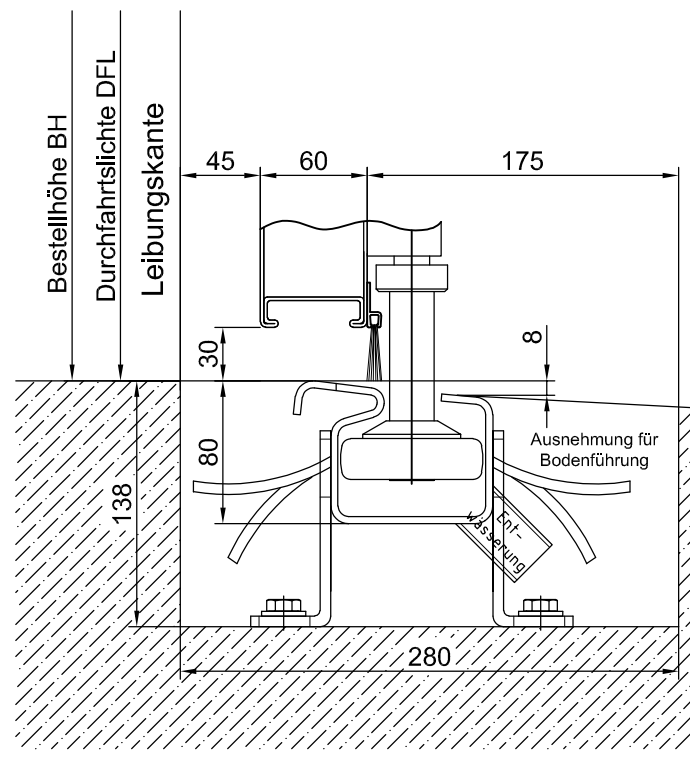
AL602SF



AL603SF

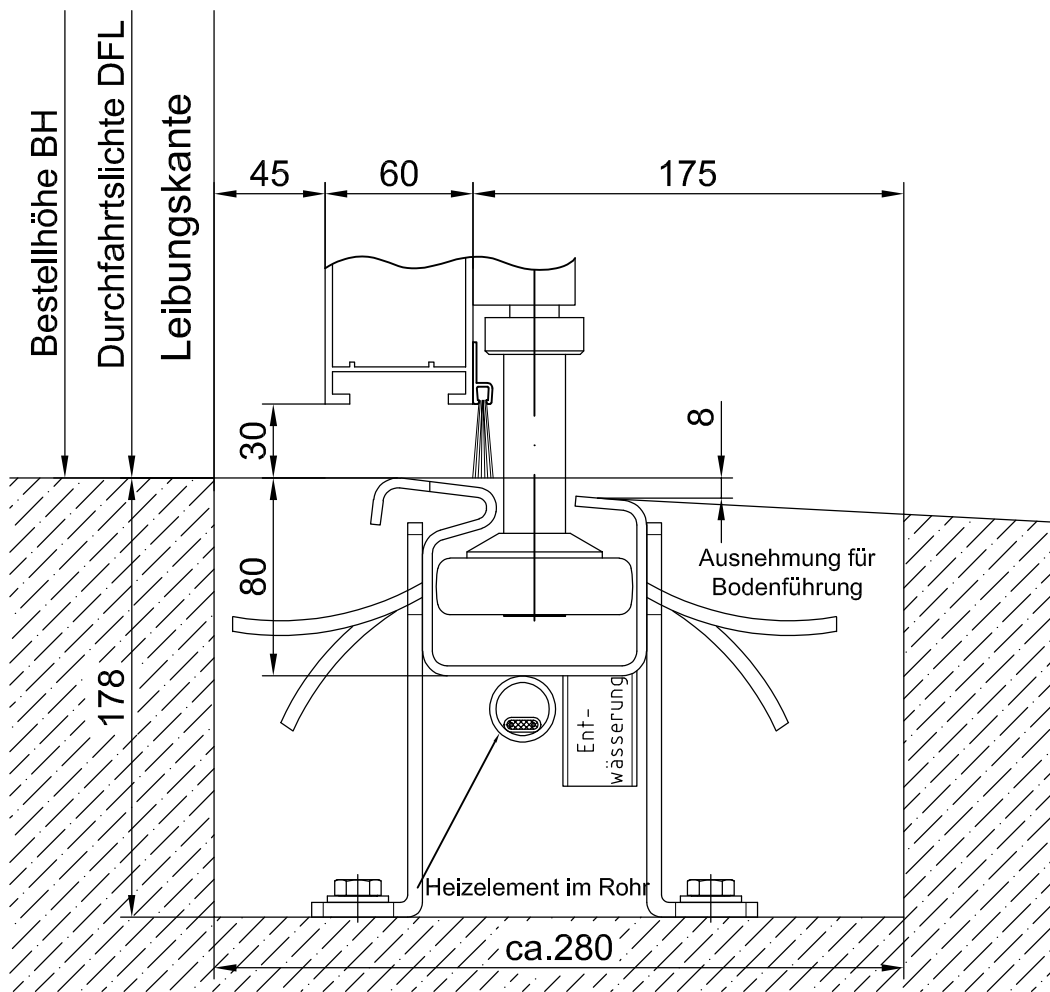


ST602SF



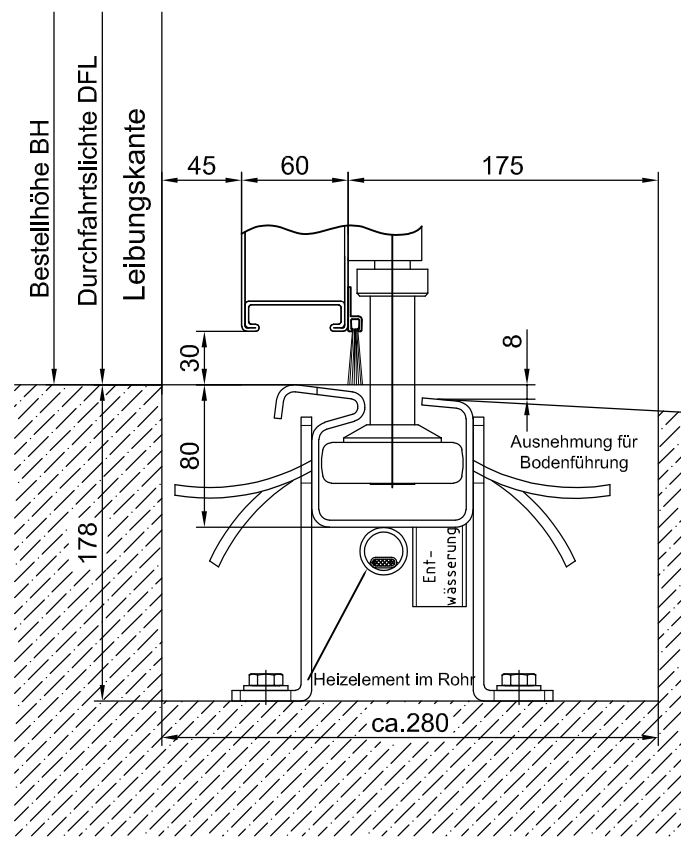
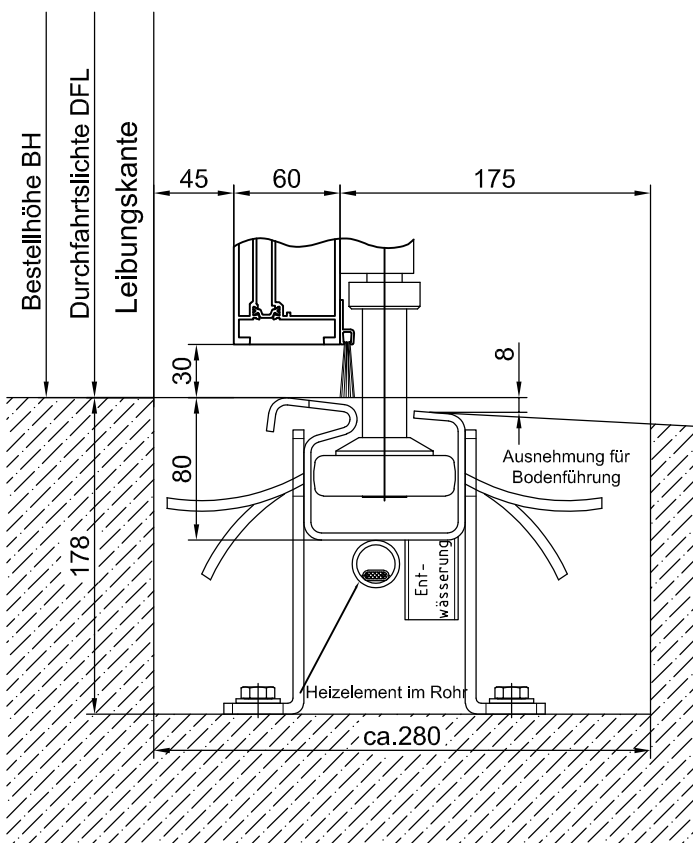
Bodenführung beheizt BF bhz. Vertikalschnitt - Detail B

AL602SF



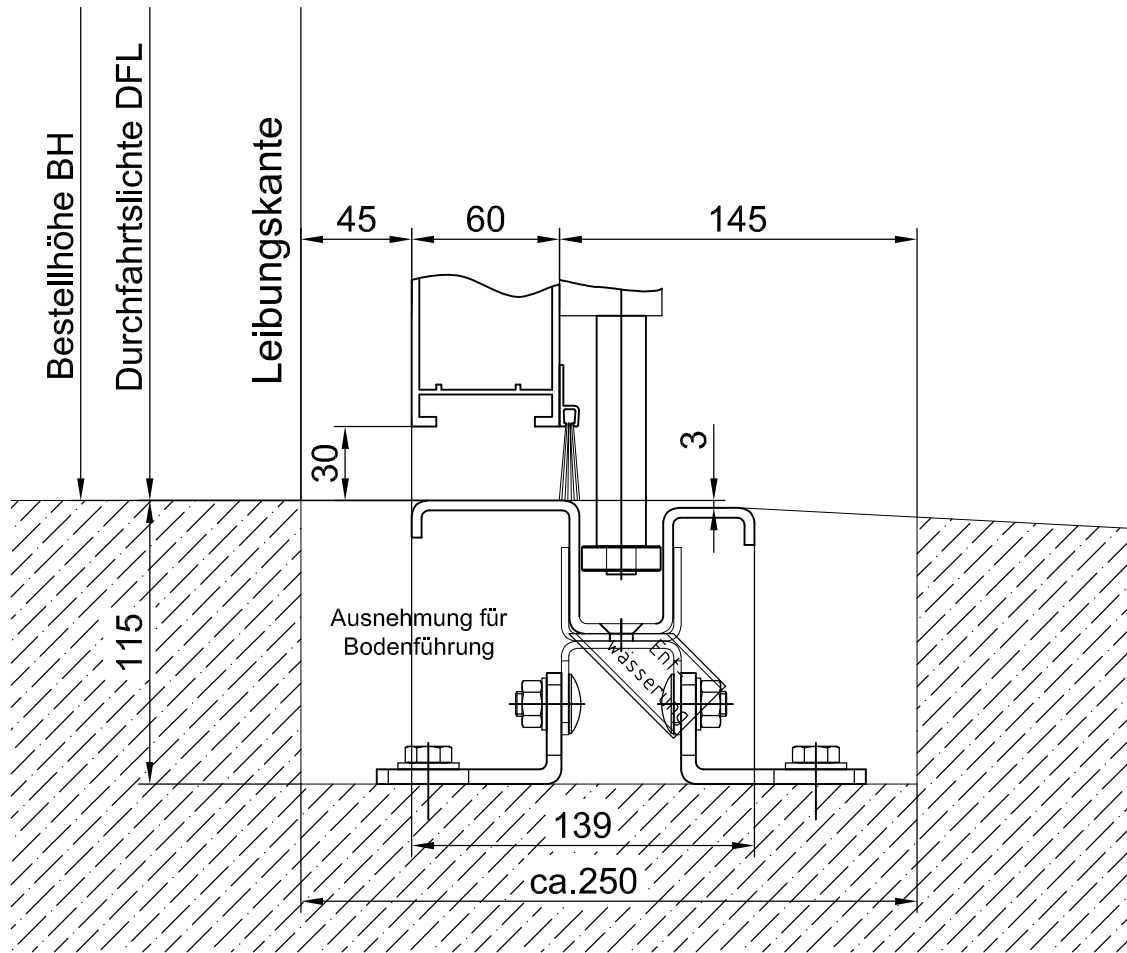
AL603SF

ST602SF



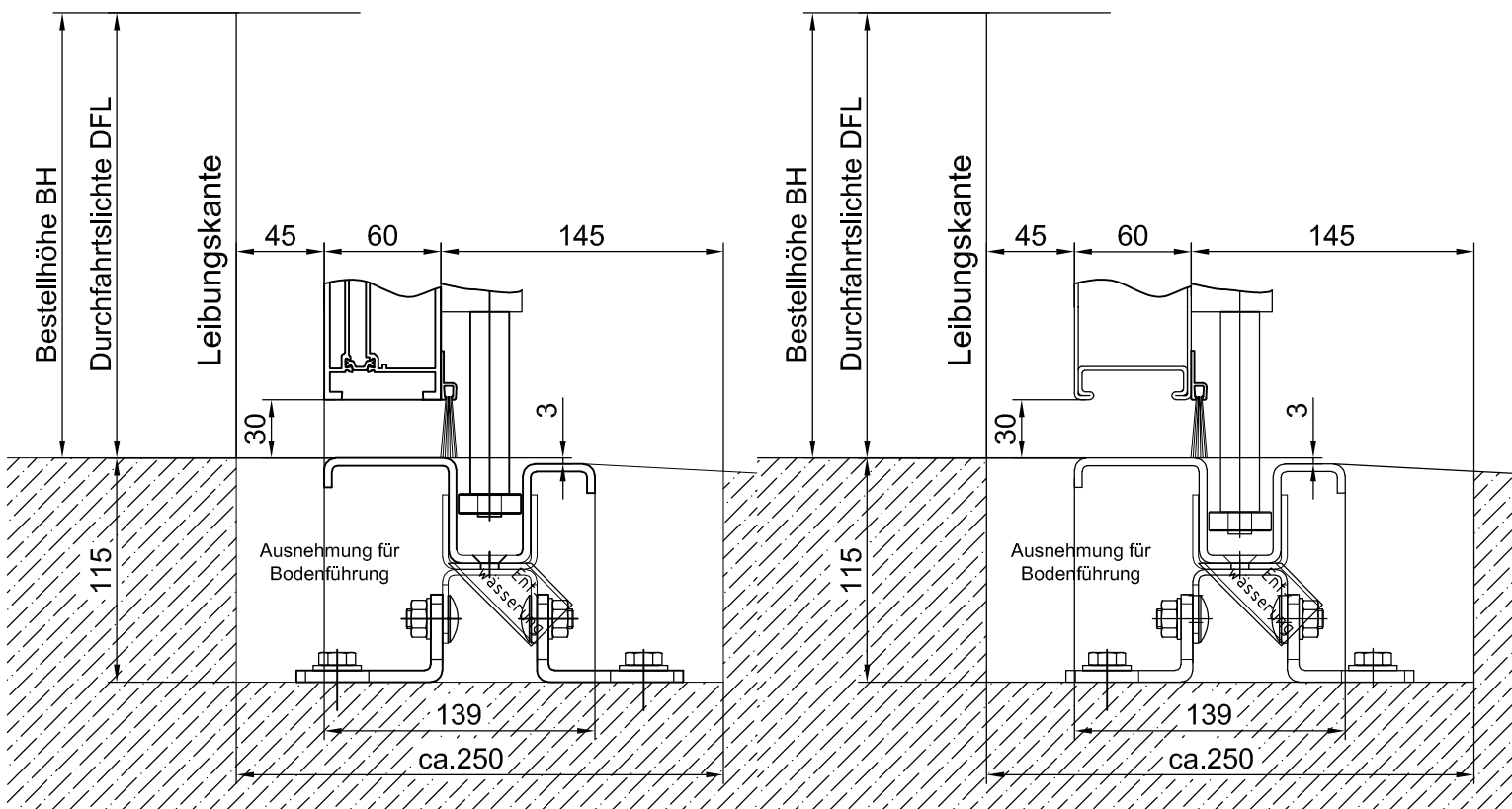
Bodenführung BF-light NIRO - Vertikalschnitt

AL602SF



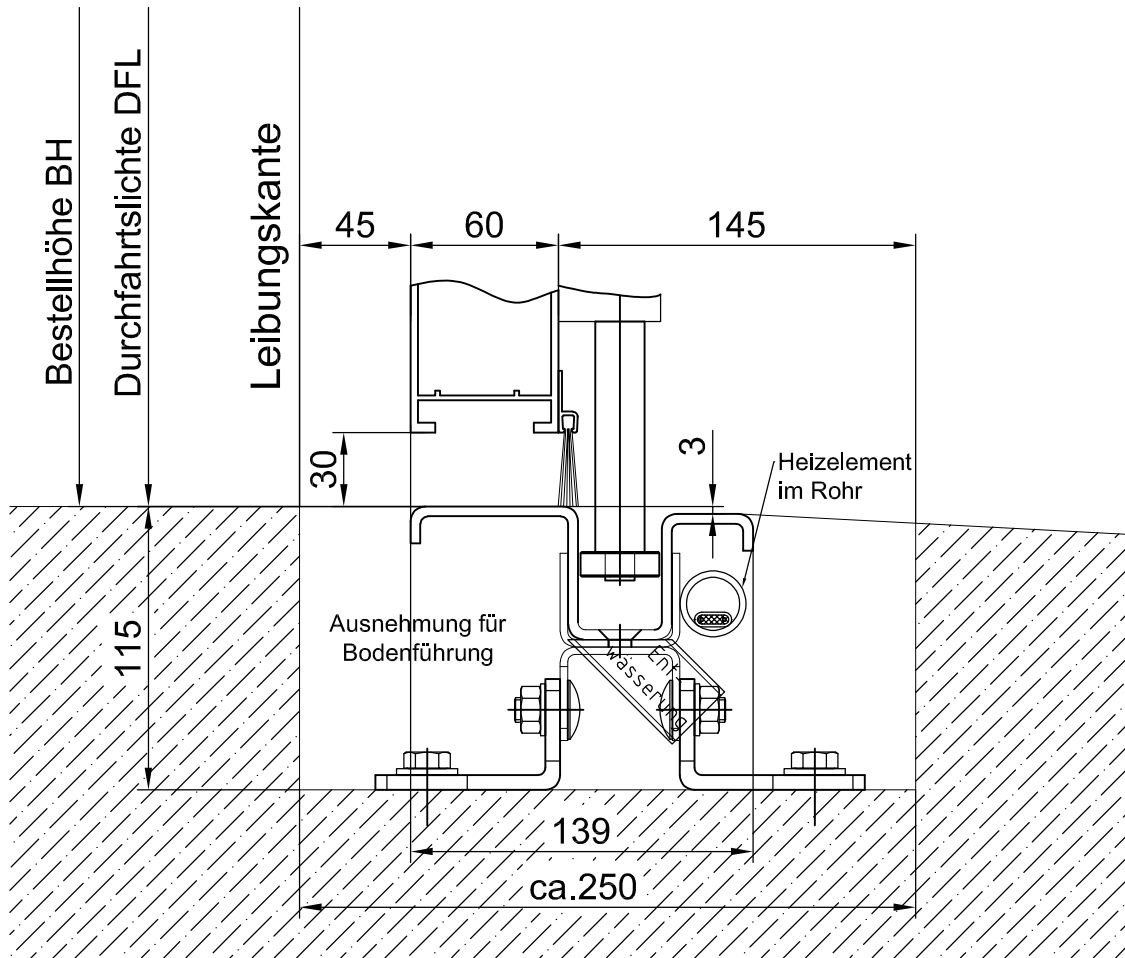
AL603SF

ST602SF



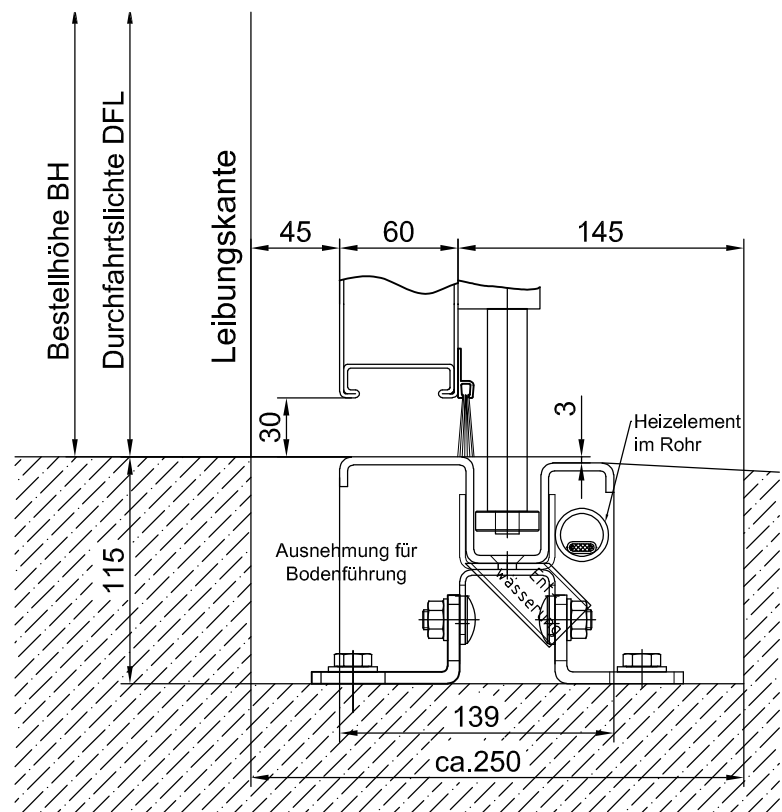
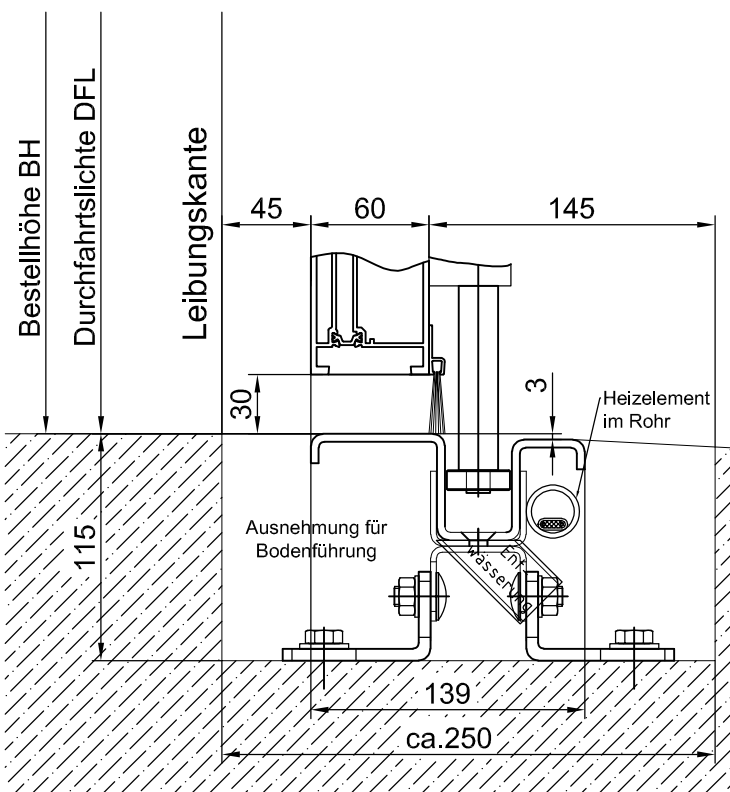
Bodenführung beheizt BF-light NIRO bhz - Vertikalschnitt

AL602SF



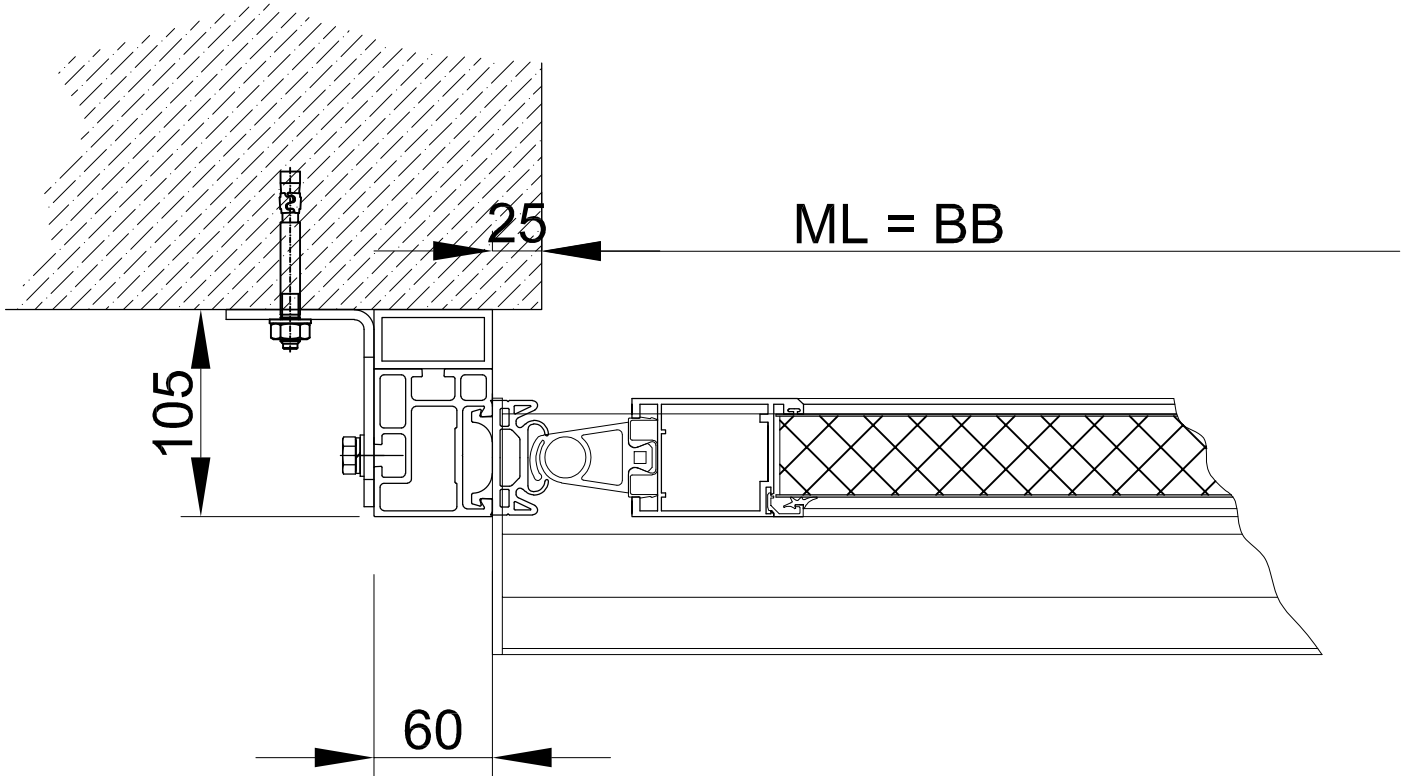
AL603SF

ST602SF

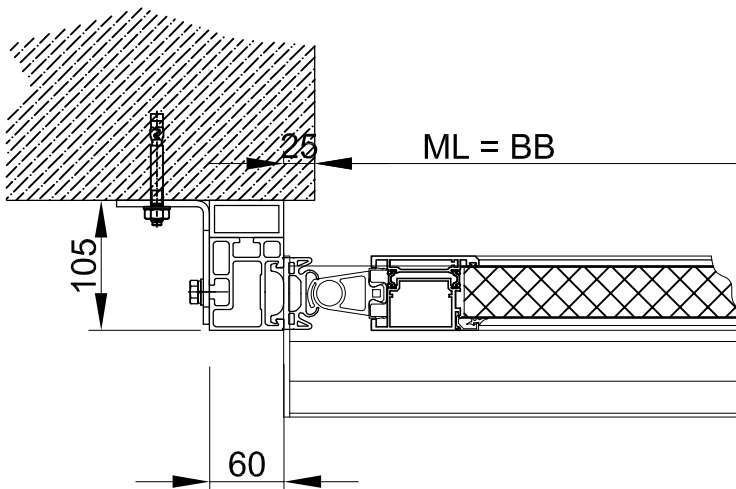


Systemzeichnung Schiebefalttor Horizontalschnitt - Detail C

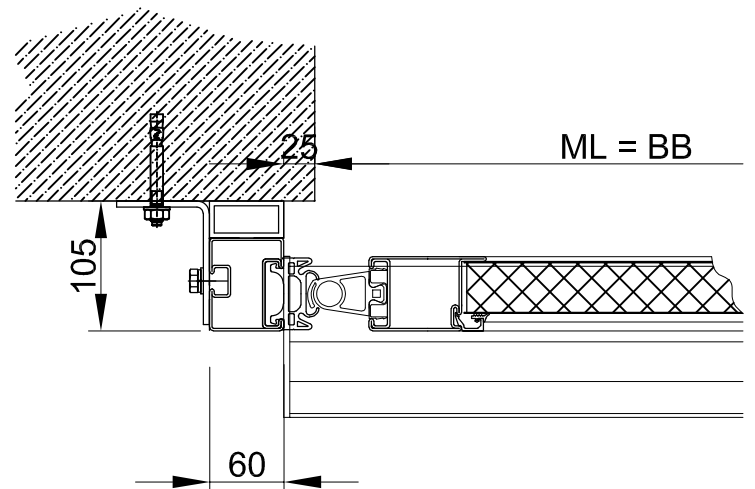
AL602SF



AL603SF

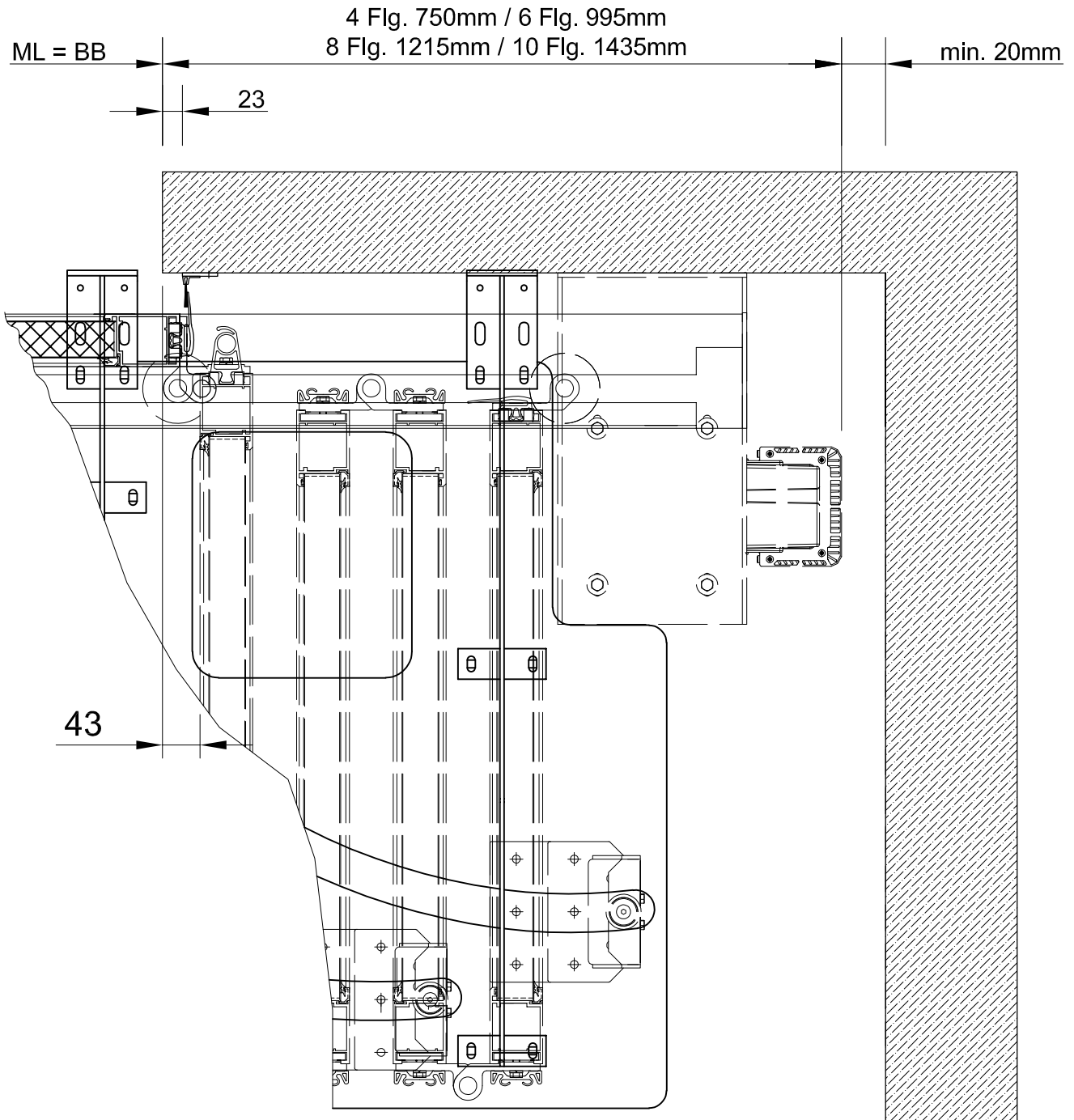


ST602SF



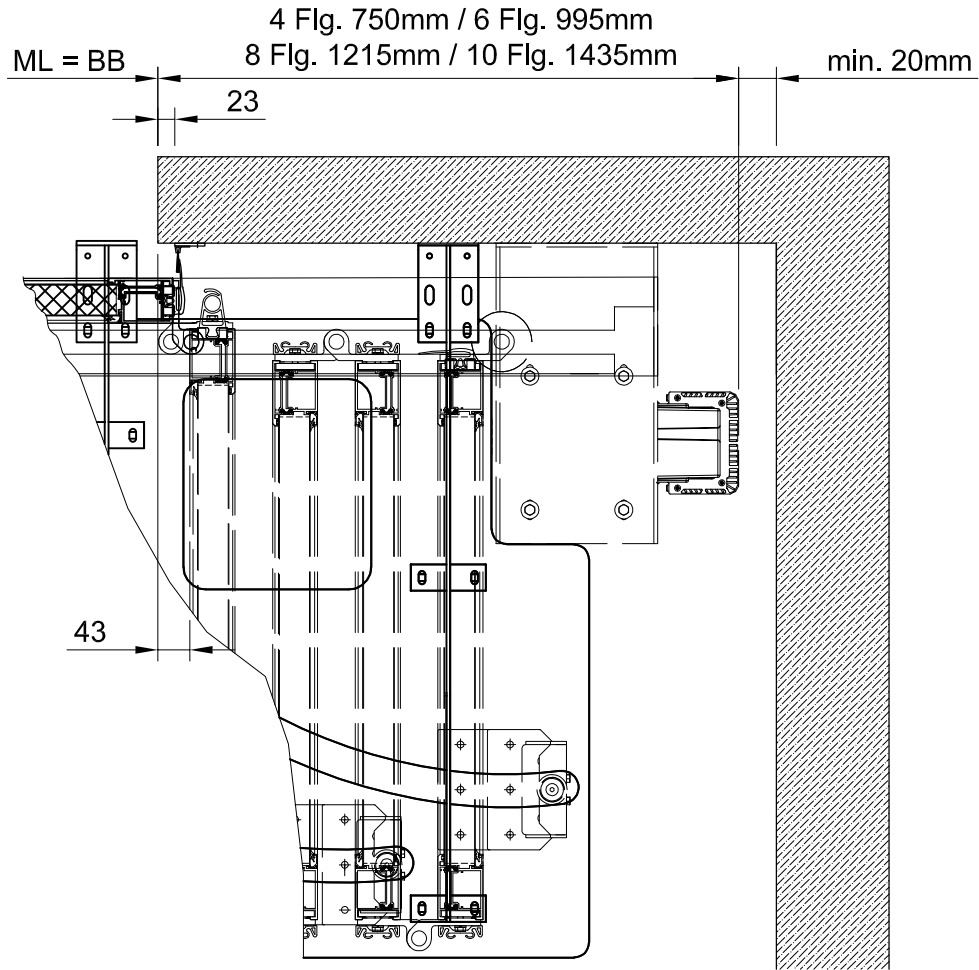
Systemzeichnung Schiebefalttor Horizontalschnitt - Detail D

AL602SF

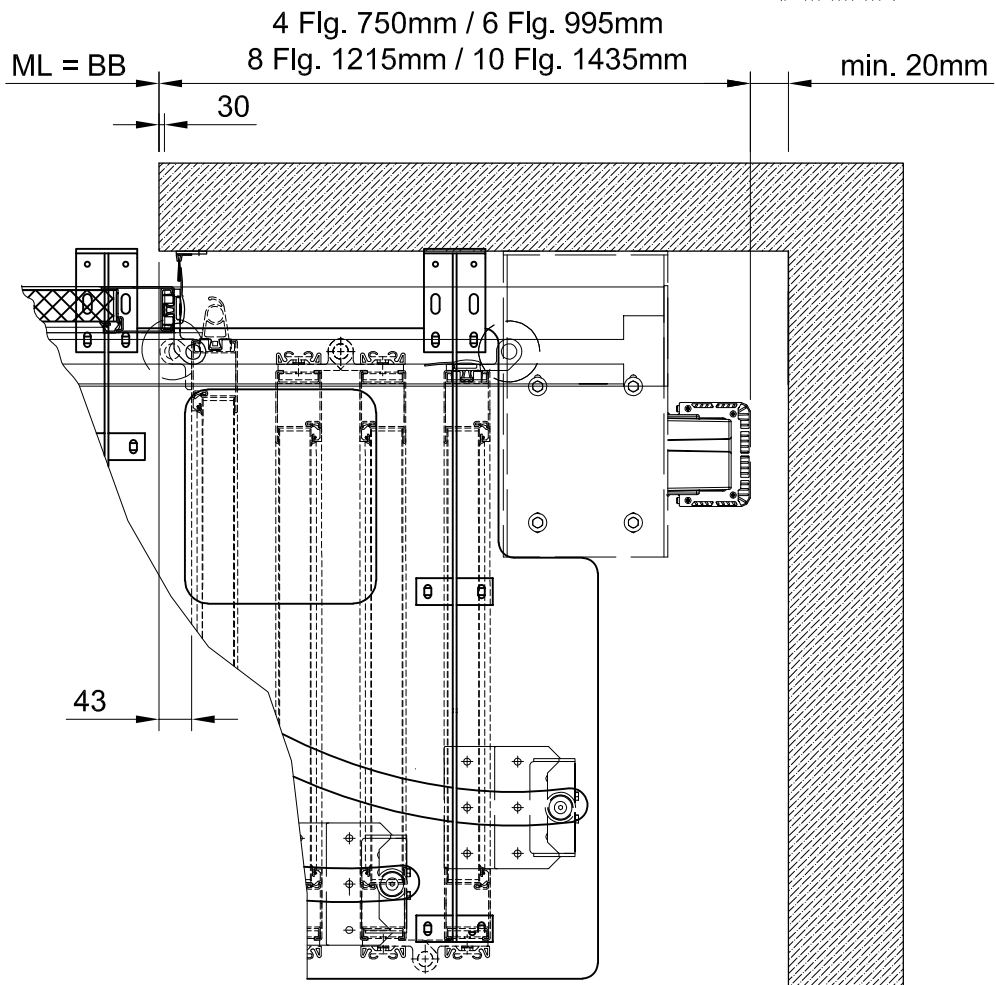


Systemzeichnung Schiebefalttor Horizontalschnitt - Detail D

AL603SF

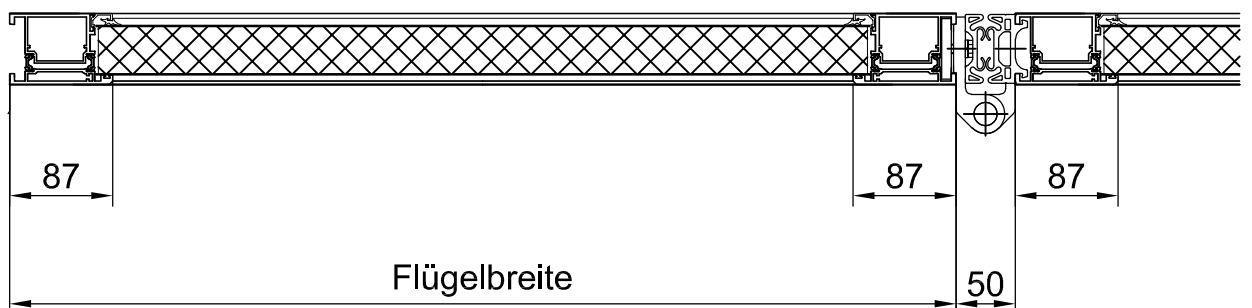
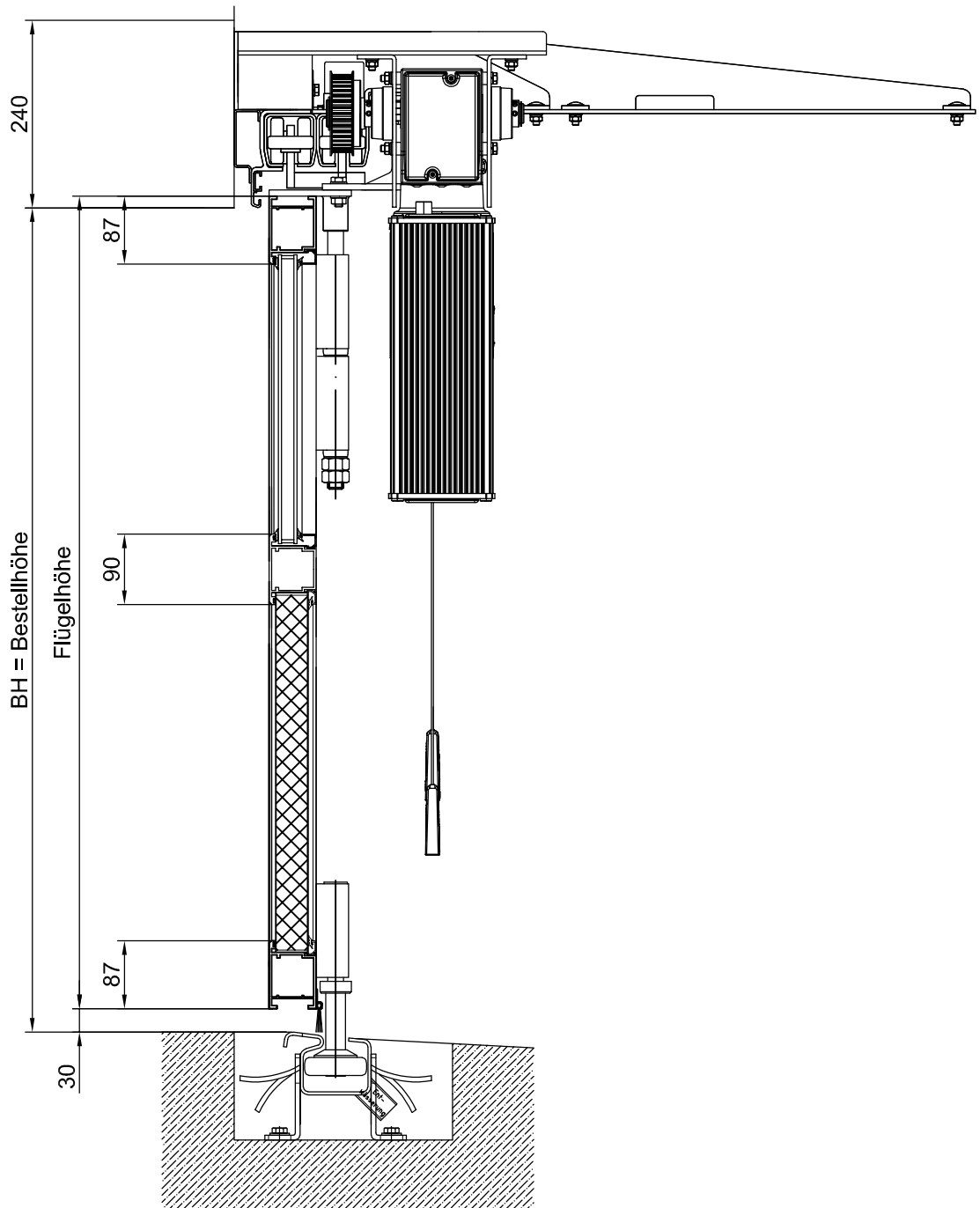


ST602SF



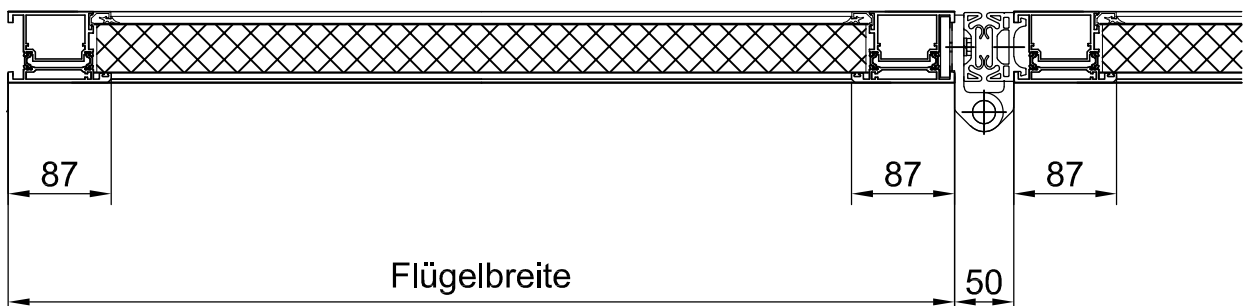
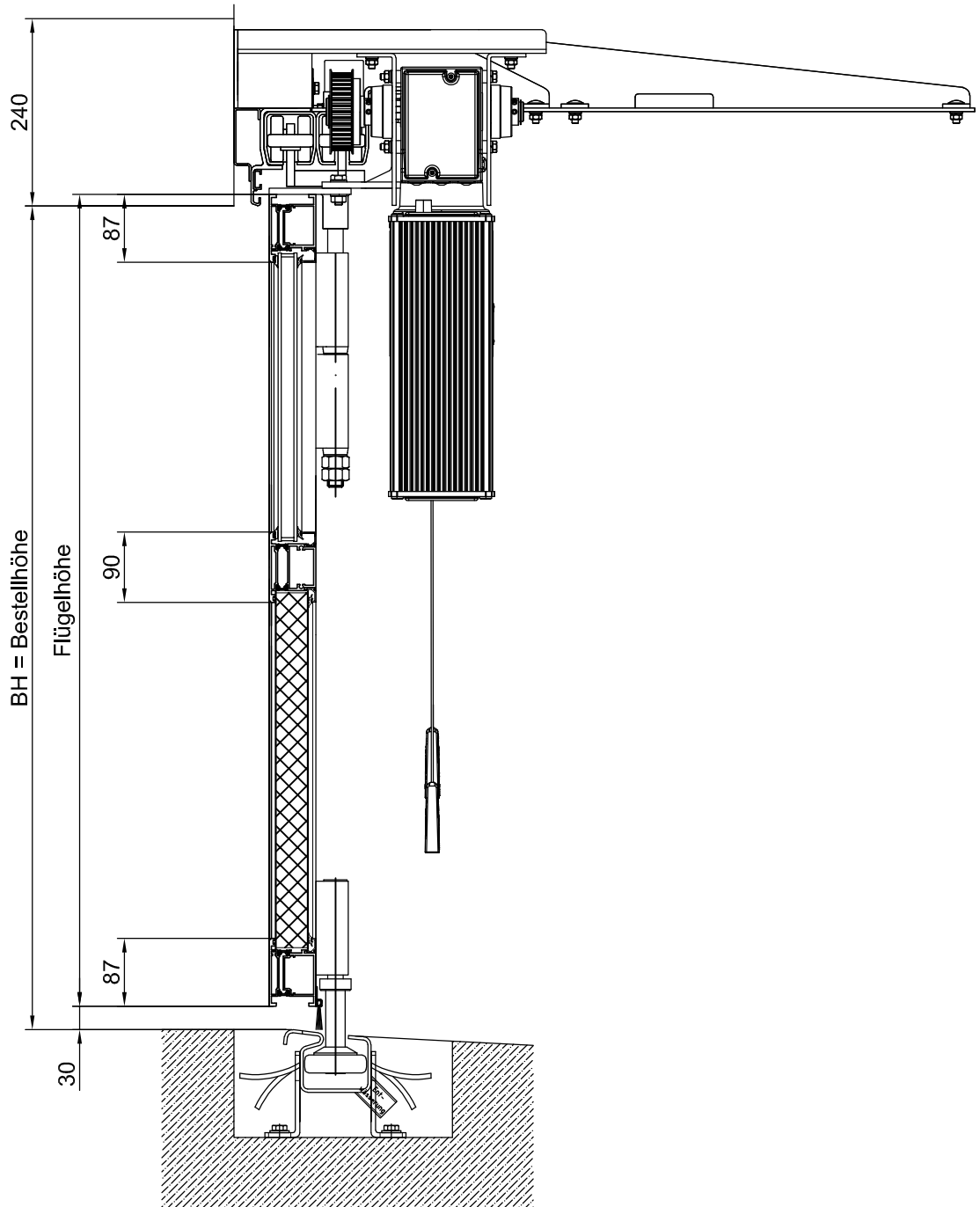
Systemzeichnung Schiebefalttor Vertikal und Horizontalschnitt

AL602SF



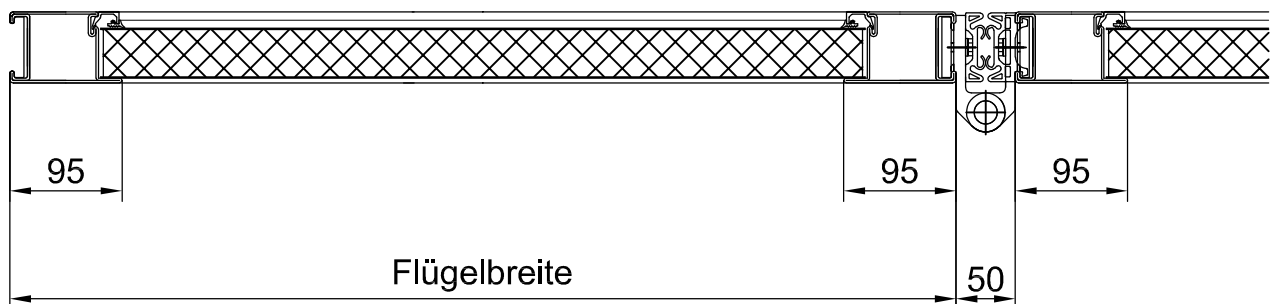
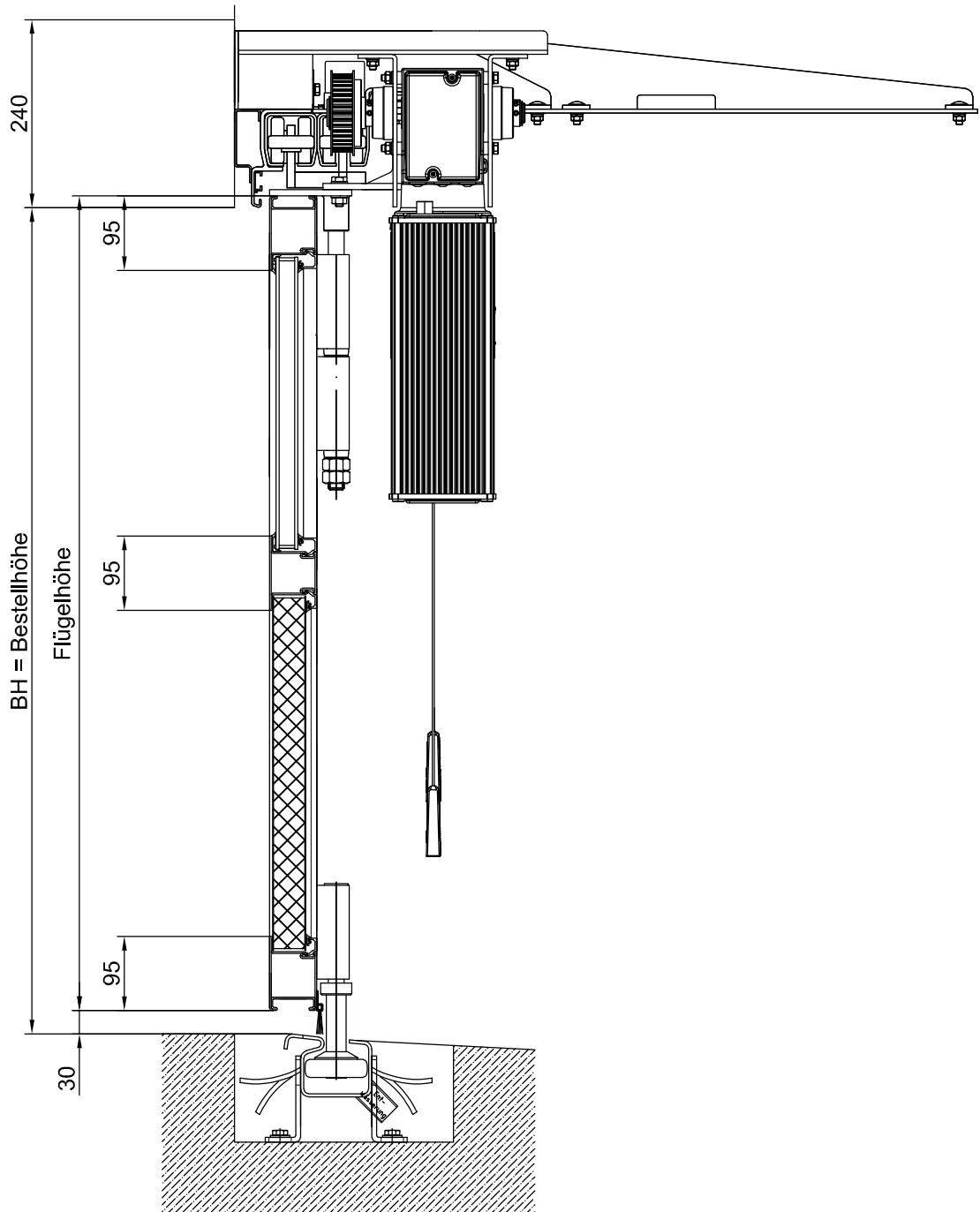
Systemzeichnung Schiebefalttor Vertikal und Horizontalschnitt

AL603SF



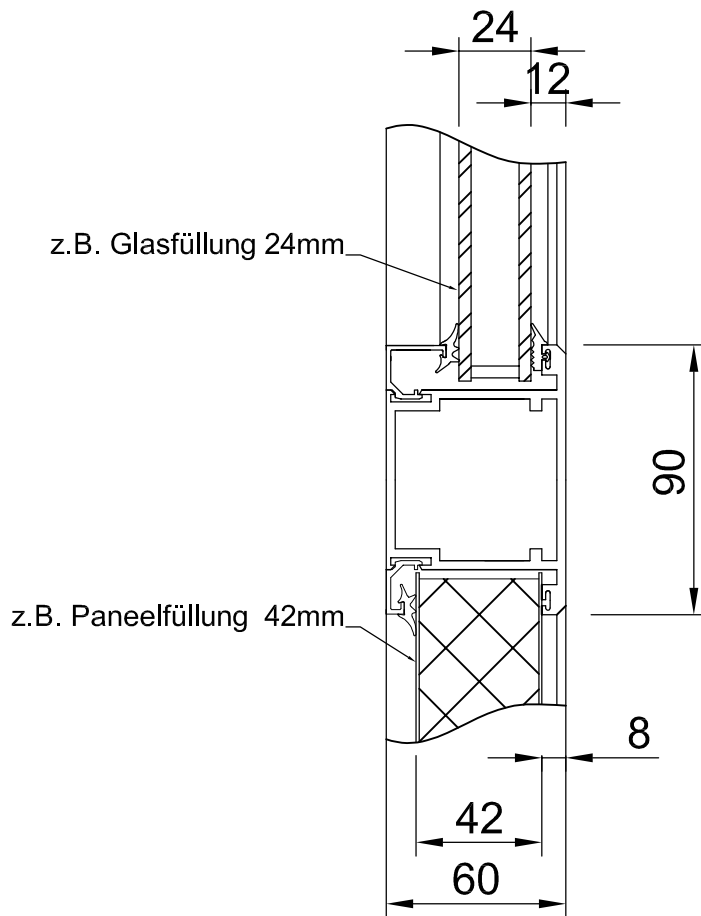
Systemzeichnung Schiebefalttor Vertikal und Horizontalschnitt

ST602SF

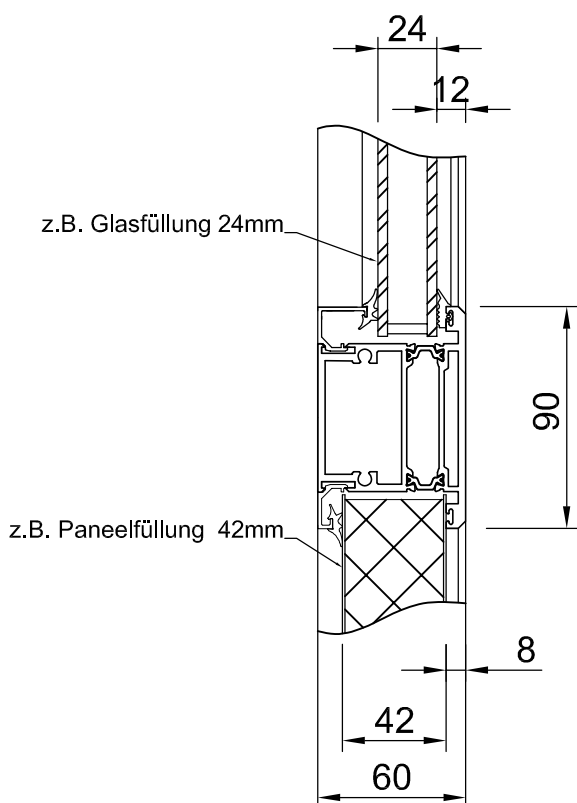


Kämpfer (Sprosse)

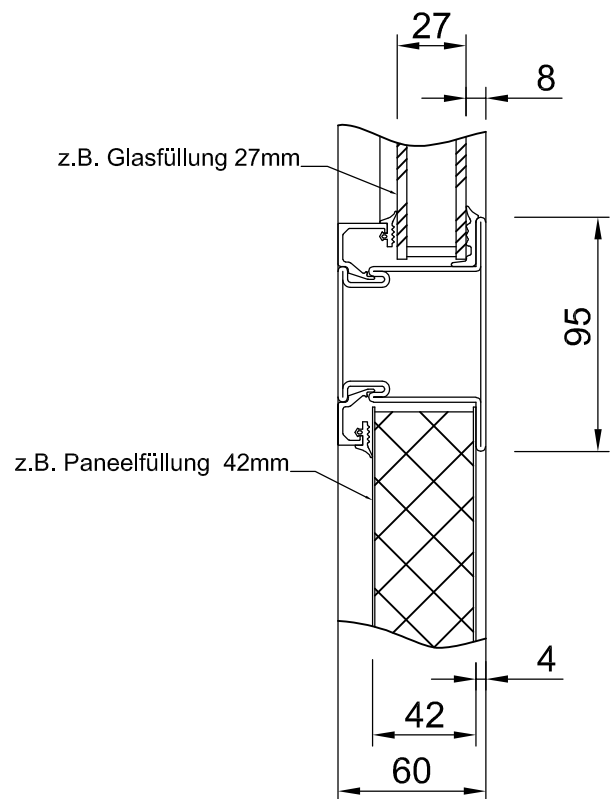
AL602SF



AL603SF

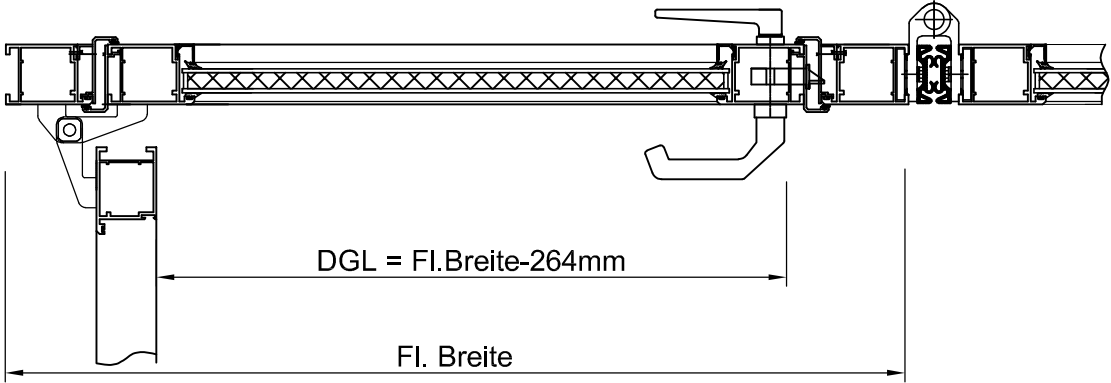


ST602SF

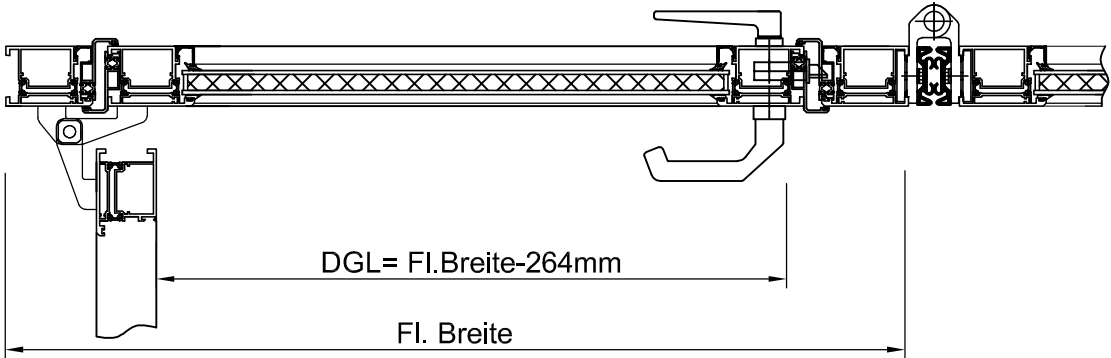


Horizontalschnitt Schlupftüre

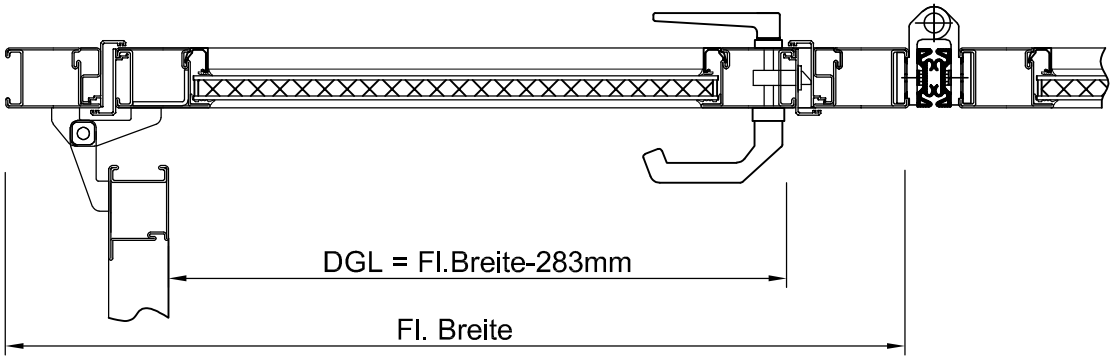
AL602SF



AL603SF

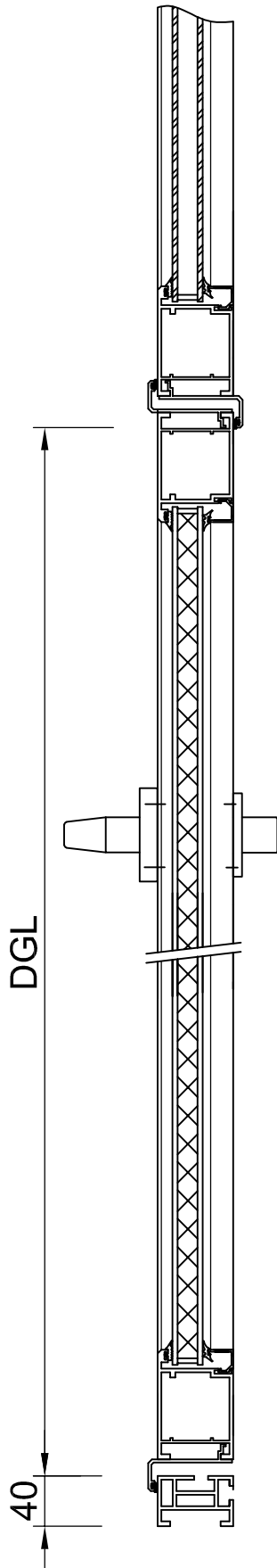


ST602SF

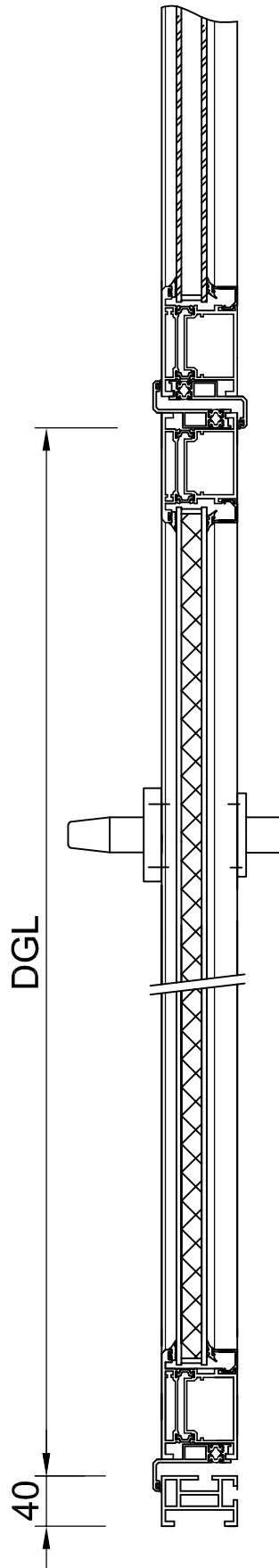


Vertikalschnitt Schlupftüre

AL602SF



AL603SF



ST602SF

