

Falttore
Alu therm. getrennt AL603EEF
Energy Efficient Frame
BR600

TECHNIK
Version 2023/11

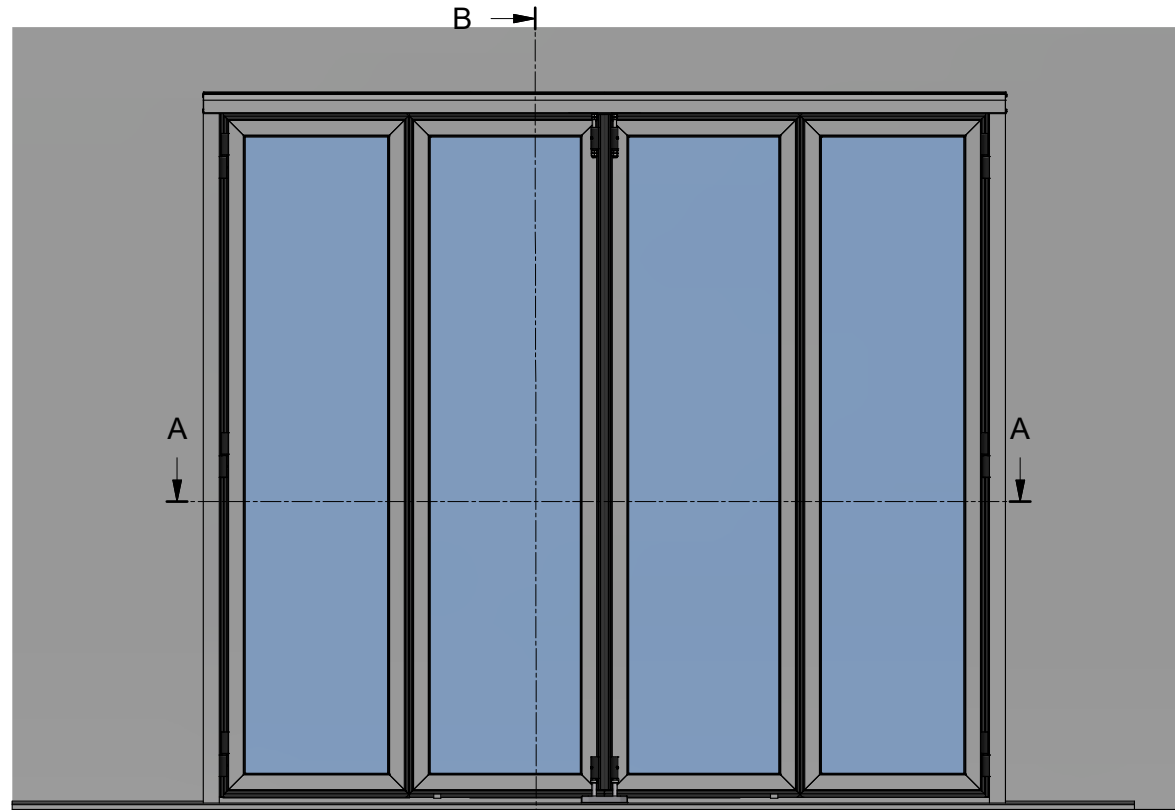
SCHNEIDER Torsysteme Ges.m.b.H.
Kalzitstrasse 1
A-4611 Buchkirchen
Tel. +43 7243/545 88-0
Web. www.schneider.co.at



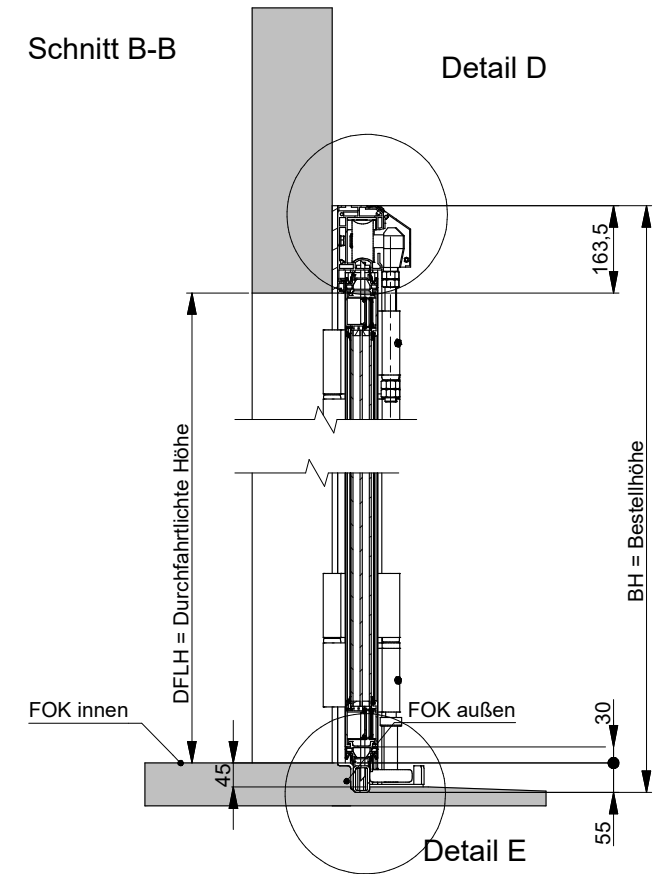
Gültig ab 01.11.2023

Alle bisherigen Unterlagen verlieren ihre Gültigkeit. Technische Änderungen, Druck- und Satzfehler, drucktechnische Farbabweichungen vorbehalten. Darstellungen sind nur beispielhaft.

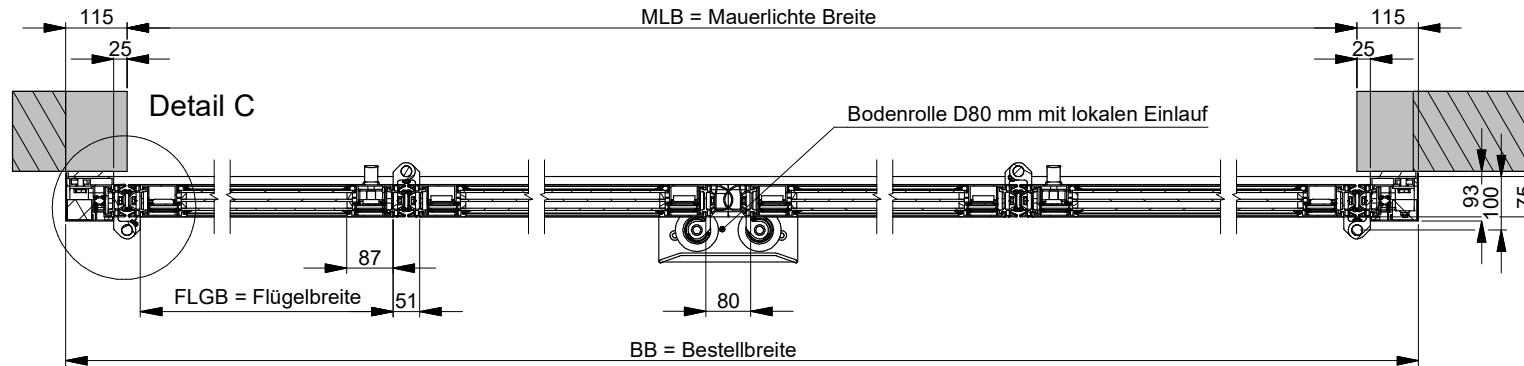
Ansicht von außen



Schnitt B-B



Schnitt A-A

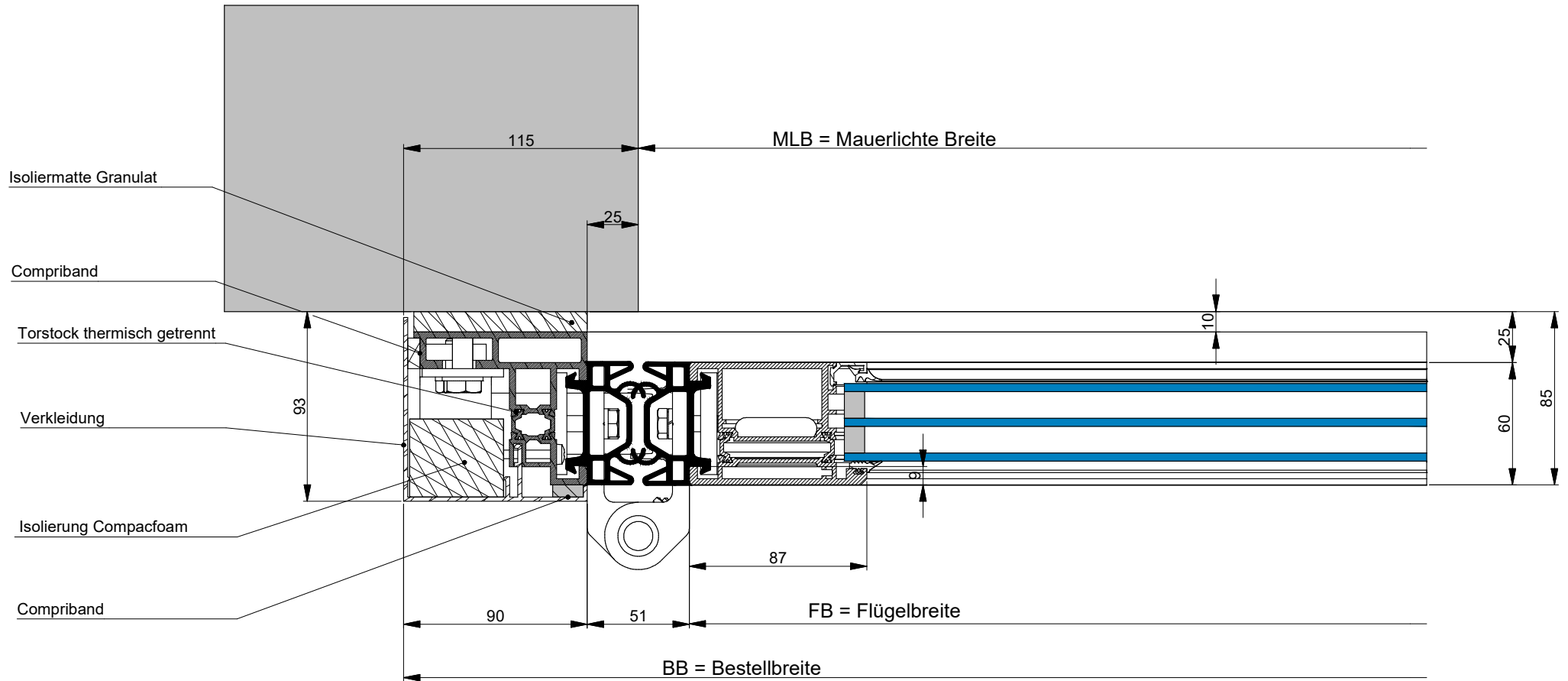


SCHNEIDER
Torsysteme



Faltdor AL603EEF
Montage vor/hinter der Leibung
Schwelle DA Bodenrolle D80mm
Übersicht 2+2

Detail C



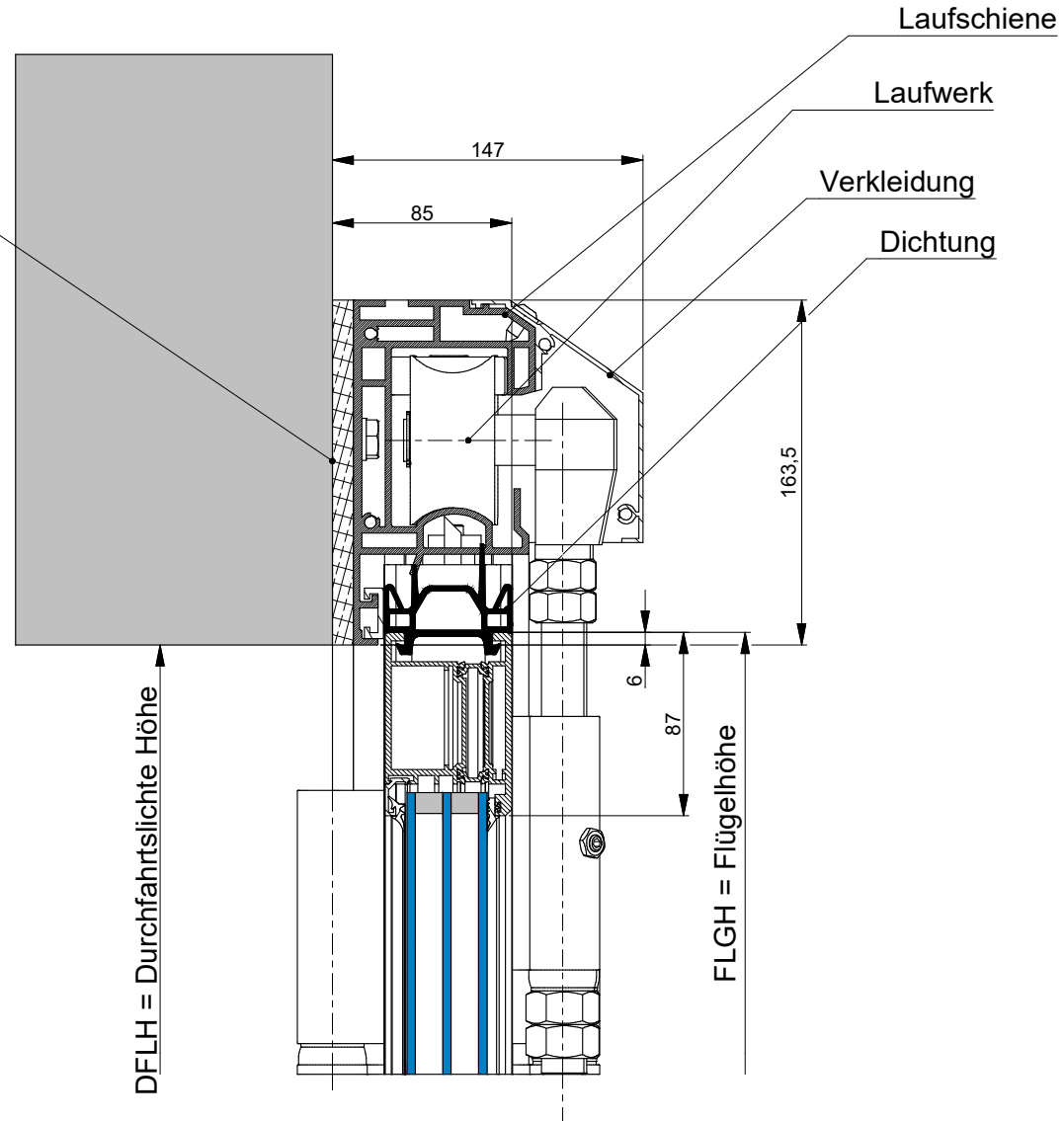
SCHNEIDER
Torsysteme



Faltdoor AL603EEF
Montage vor/hinter der Leibung
Torstock thermisch getrennt

Detail D

Isoliermatte Granulat

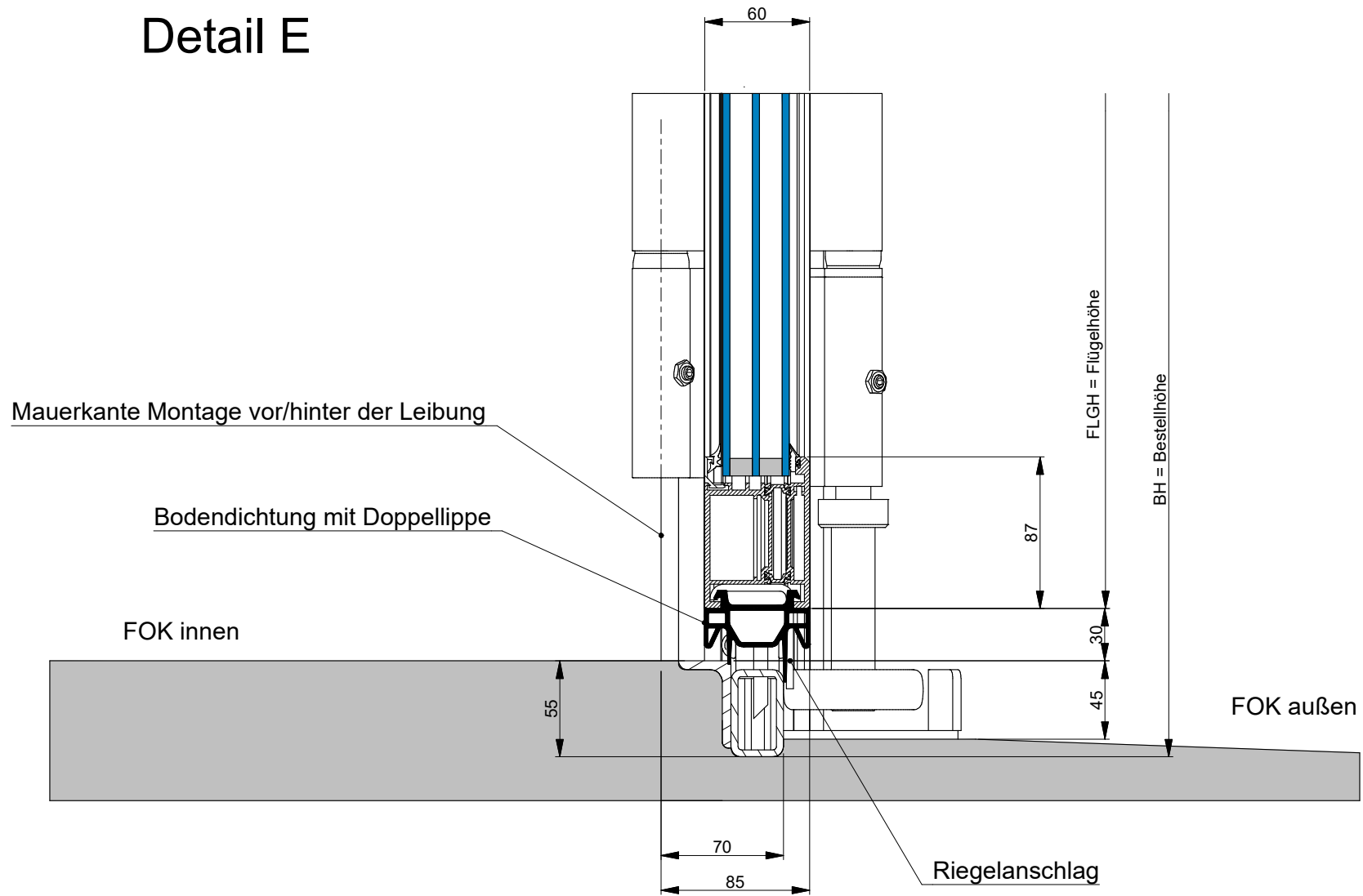


SCHNEIDER
Torsysteme



Falttor AL603EEF
Montage vor/hinter der Leibung
Sturzdetaill

Detail E

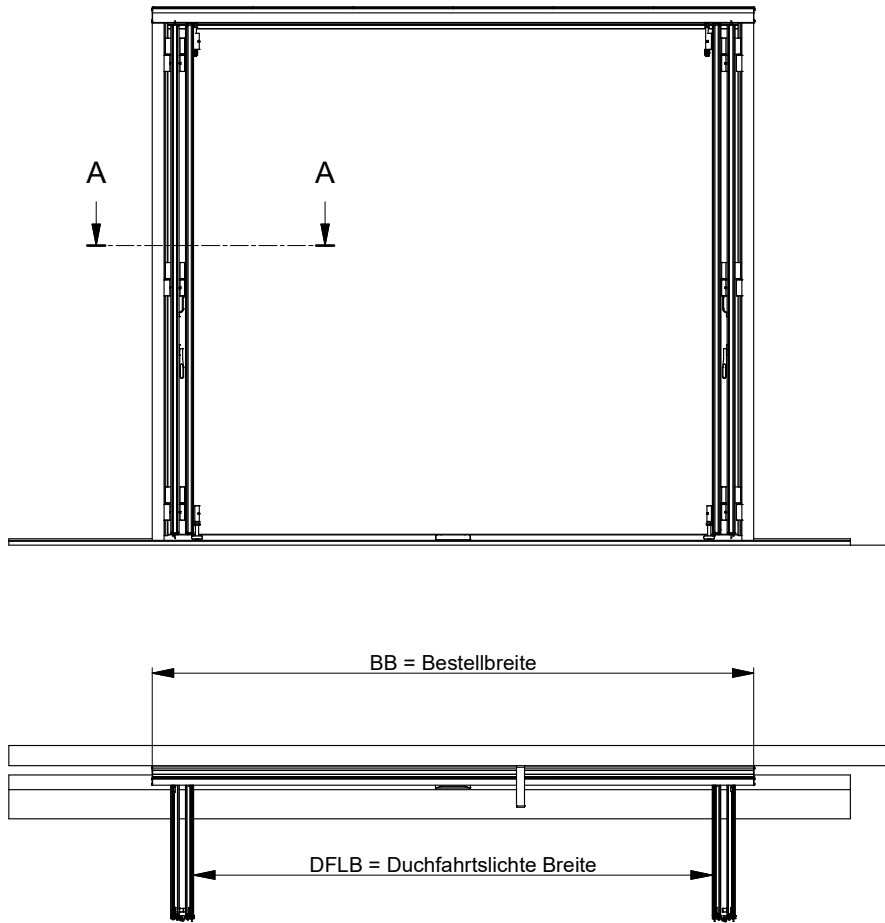


SCHNEIDER
Torsysteme

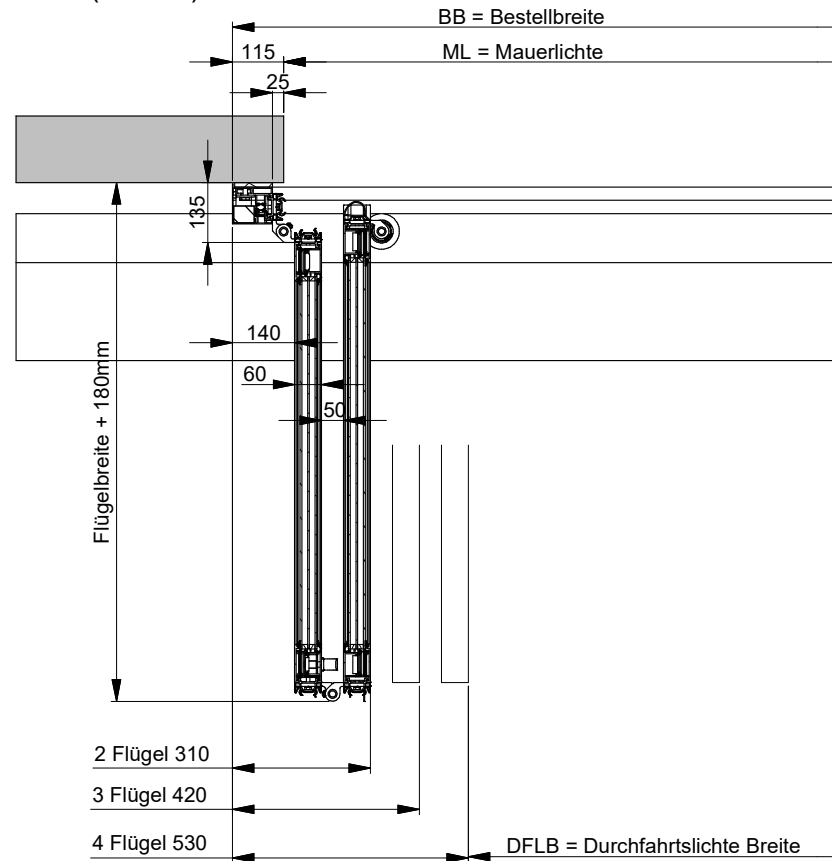


Faltor AL603EEF
Montage vor/hinter der Leibung
Schwelle DA Bodenrolle D80mm

Ansicht von außen



A-A (1 : 12)

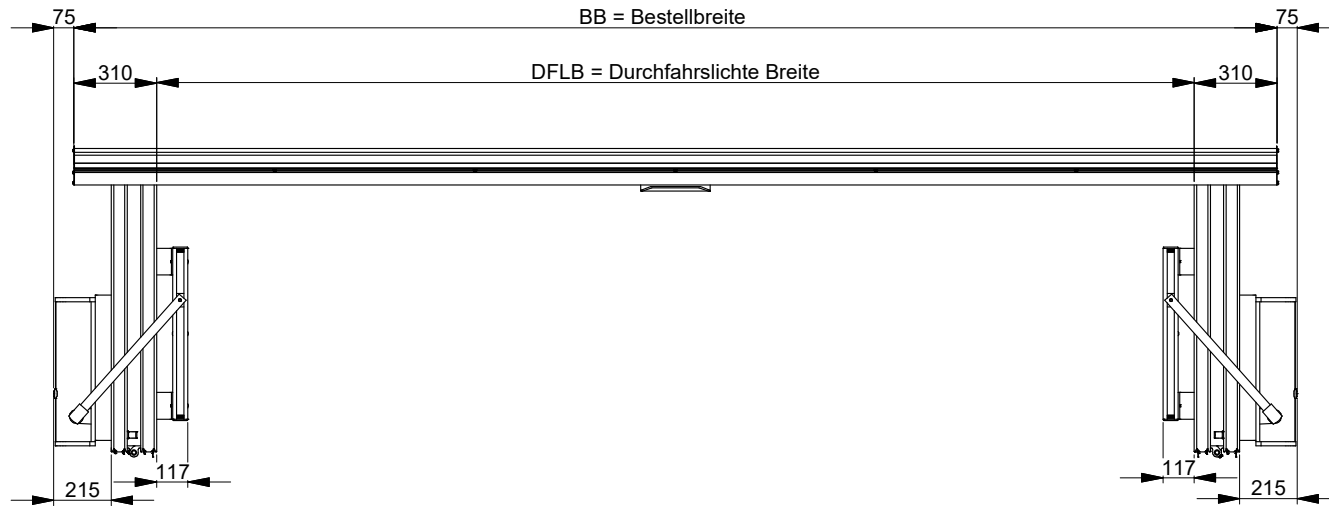
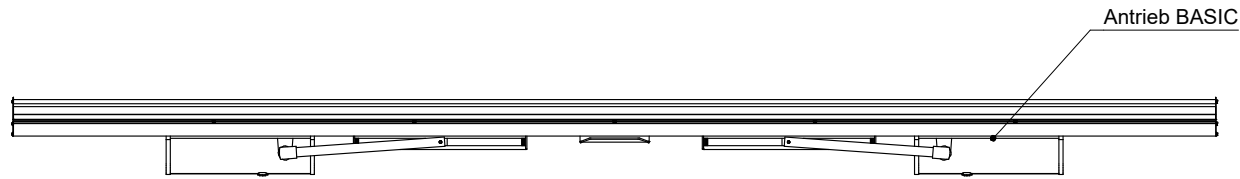
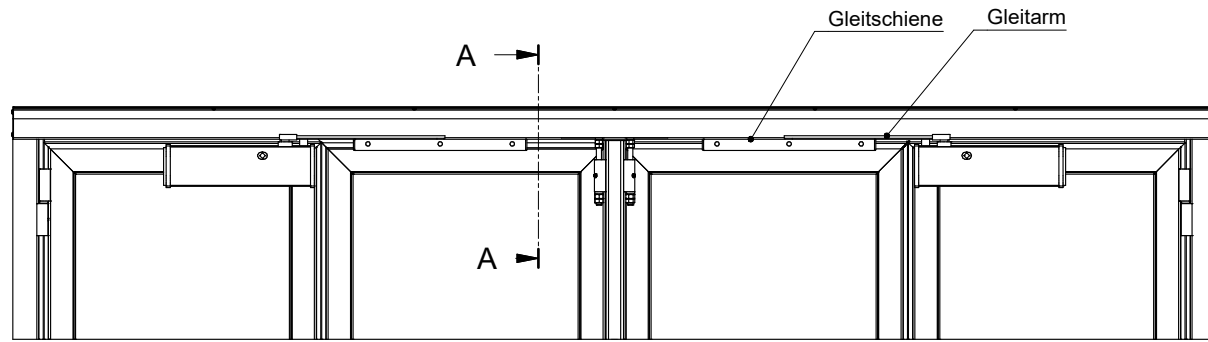


SCHNEIDER
Torsysteme

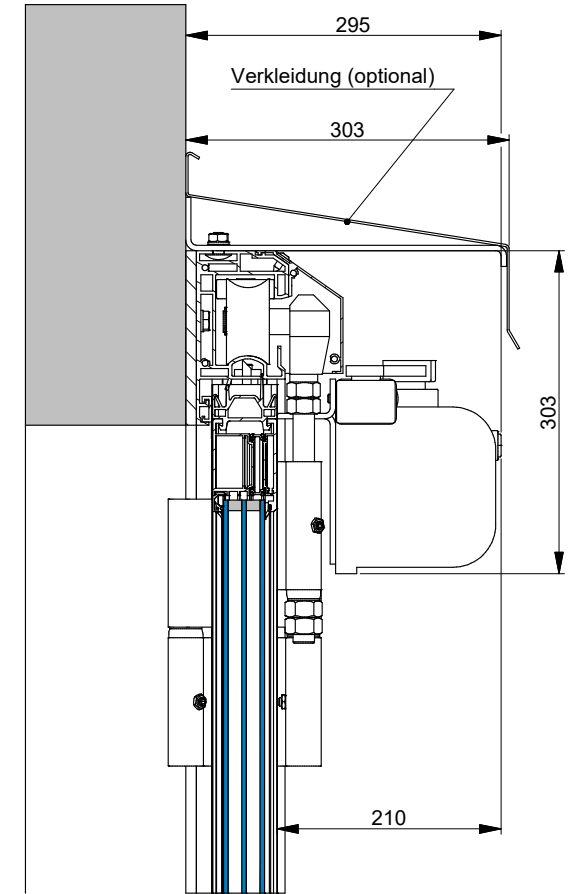


Faltdor AL603EEF
Montage vor/hinter der Leibung
Laufschienenausführung
90/90 Grad

Ansicht von außen



Schnitt A-A

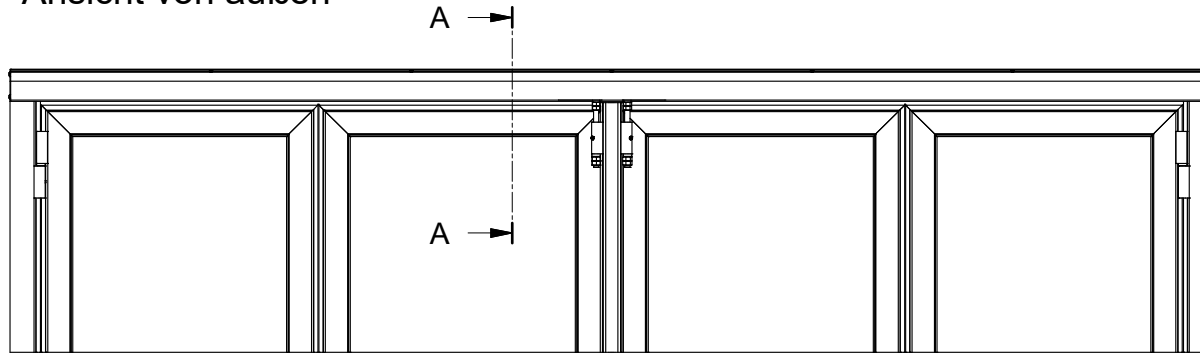


SCHNEIDER
Torsysteme

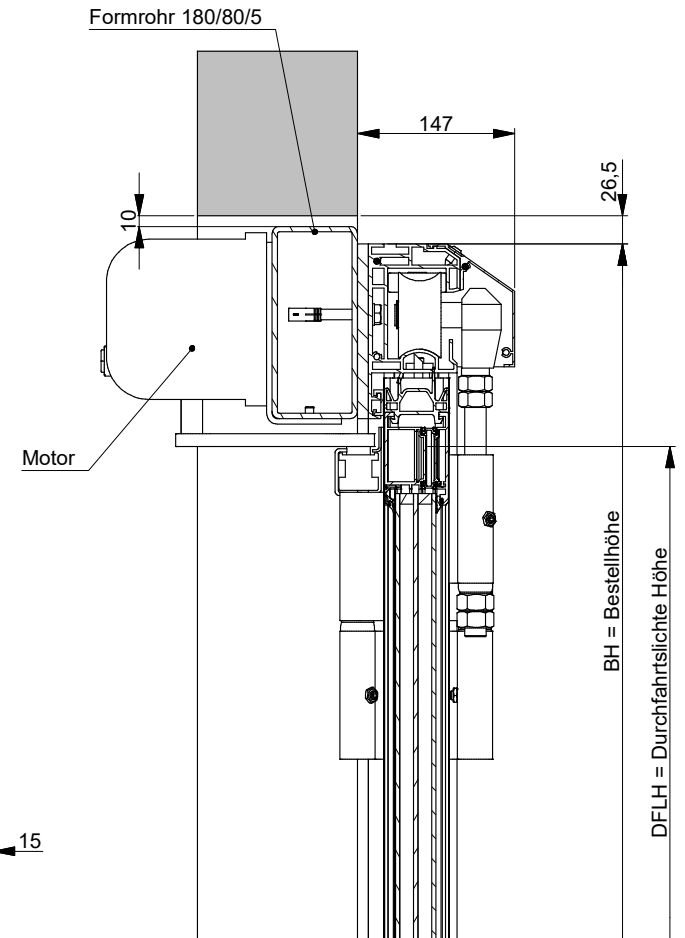


Falttor AL603EEF
Falttorantrieb 2+2
BASIC/BASIC-TD

Ansicht von außen



Schnitt A-A

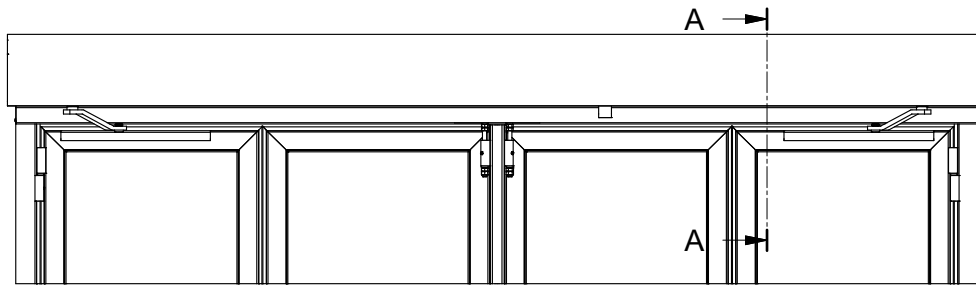


SCHNEIDER
Torsysteme

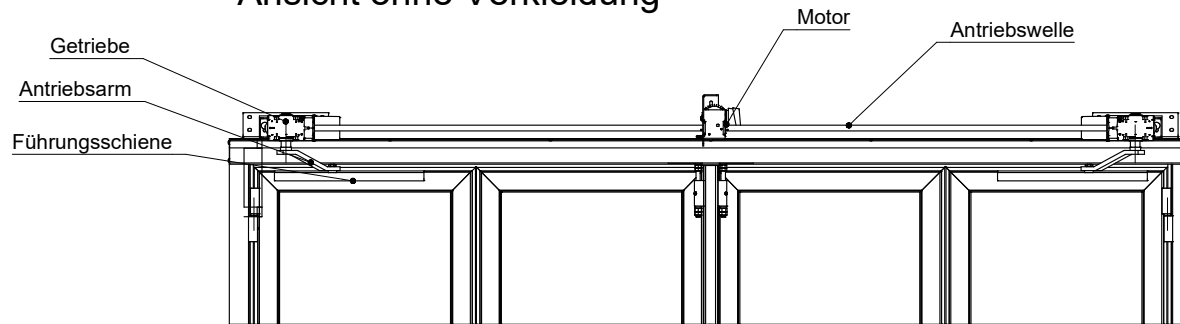


Falttor AL603EEF
Falttorantrieb 2+2
BASIC/BASIC-TD
innenliegend

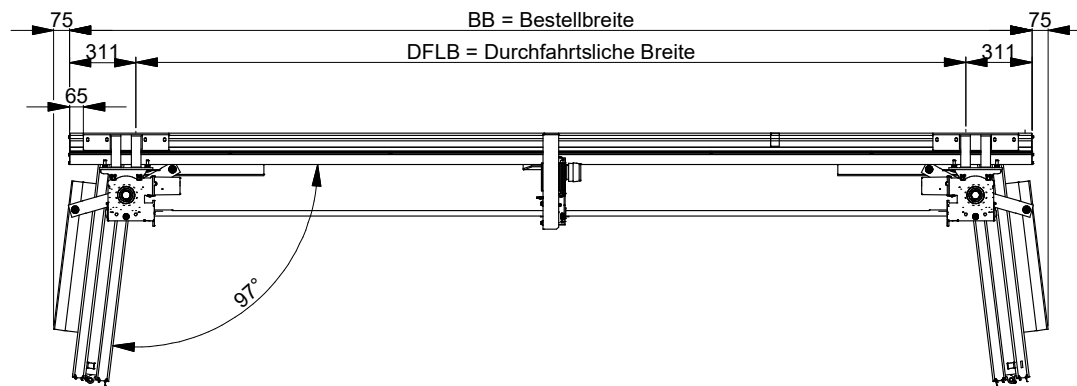
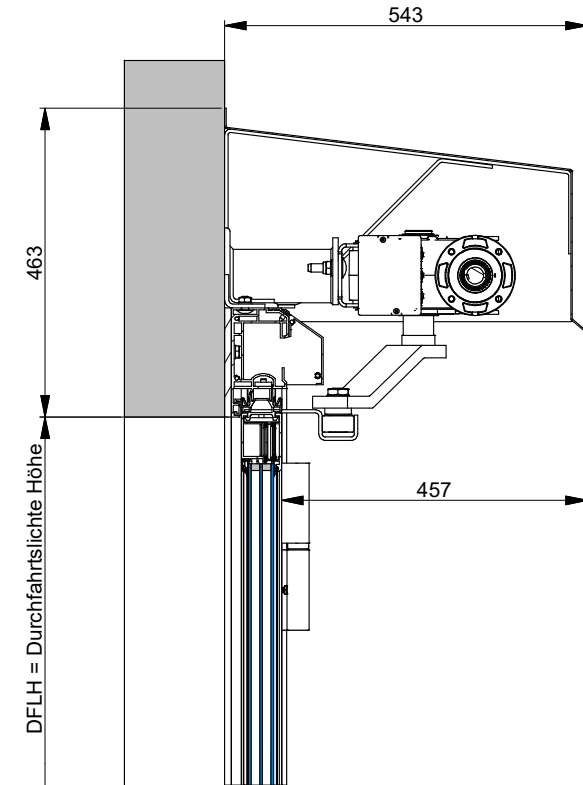
Ansicht mit Verkleidung



Ansicht ohne Verkleidung



Schnitt A-A

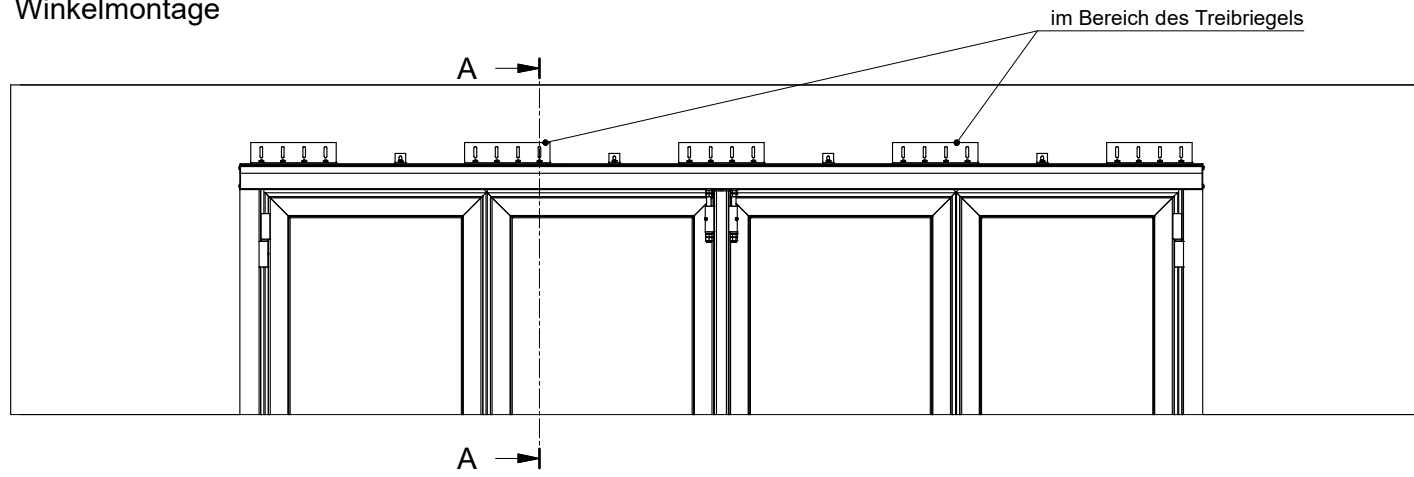


SCHNEIDER
Torsysteme

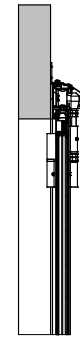


Falttor AL603EEF
Falttorantrieb 2+2
POWER-F

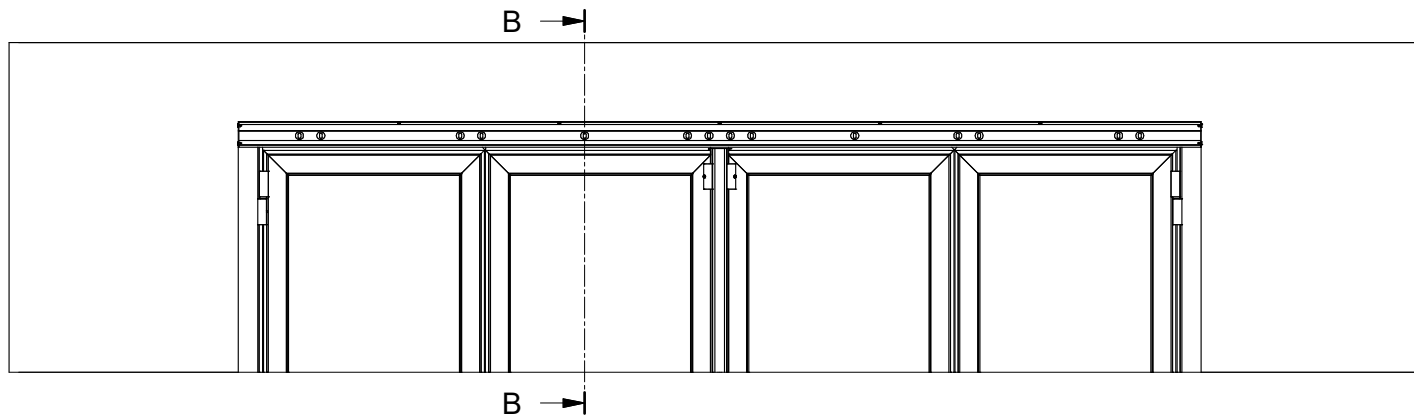
Winkelmontage



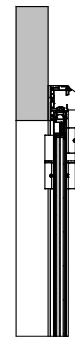
A-A (1 : 25)



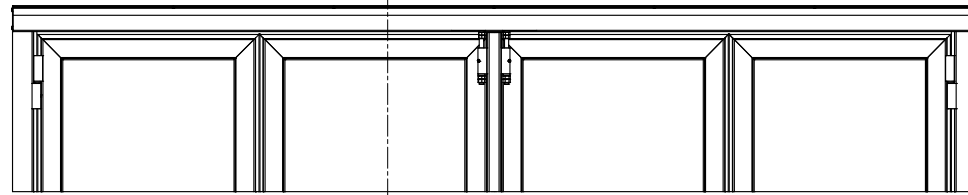
Montage durch Laufschiene



B-B (1 : 25)

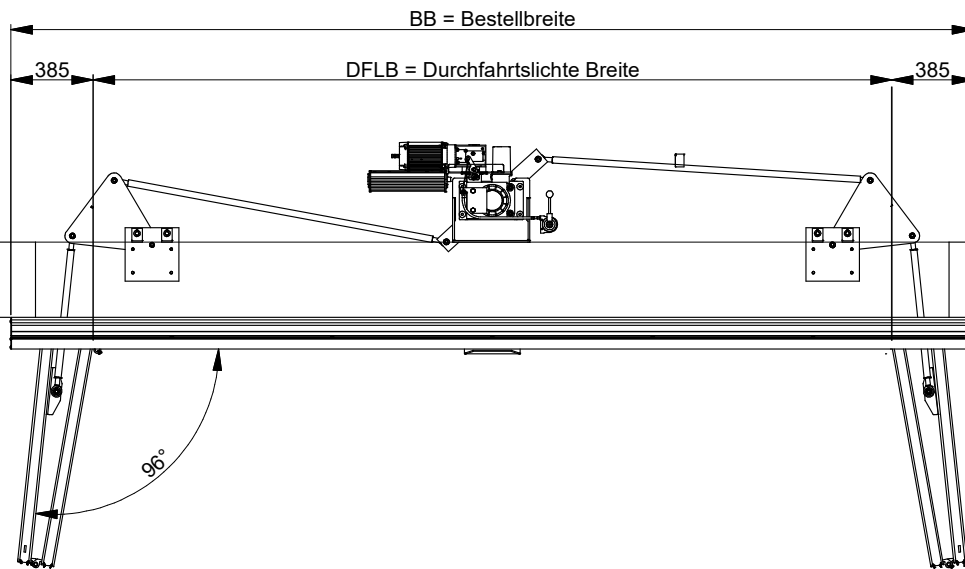
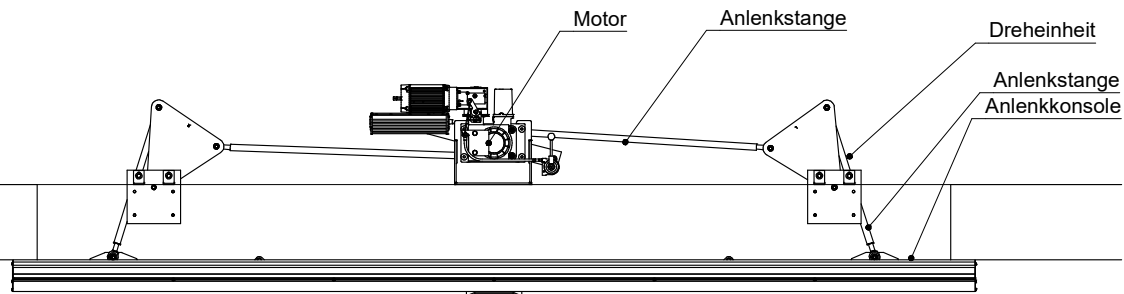


Ansicht von außen

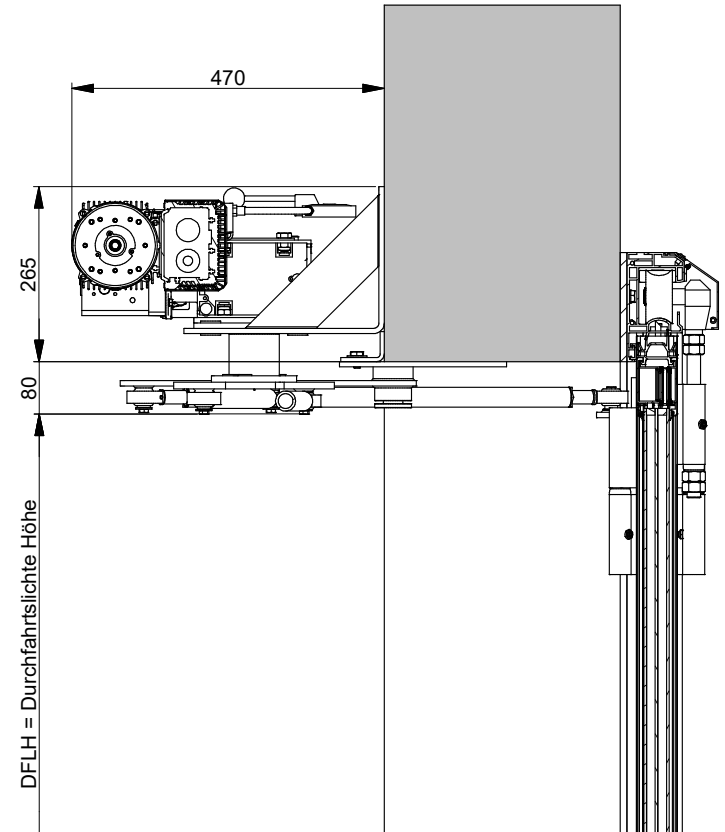


A →

← A



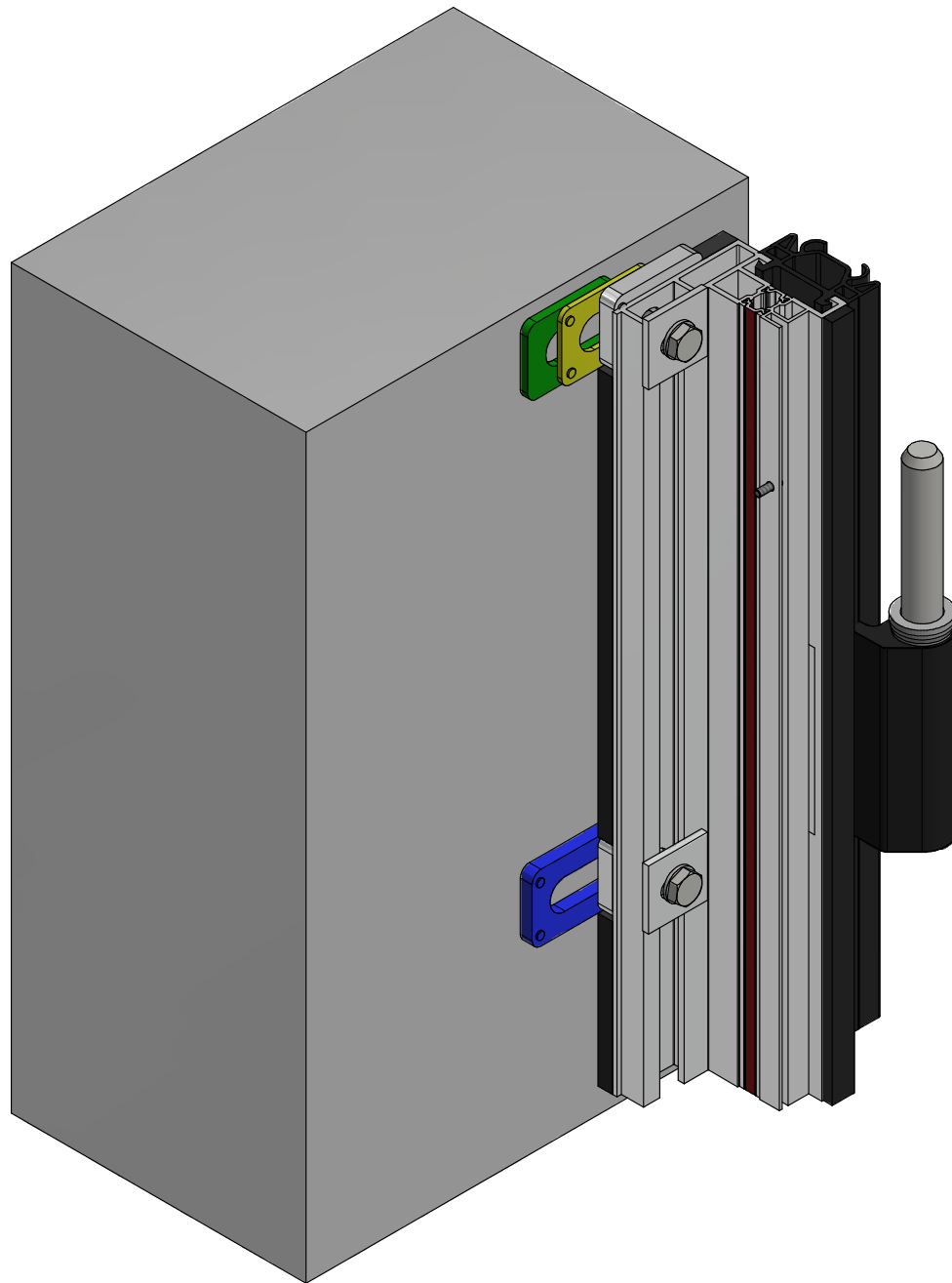
Schnitt A-A



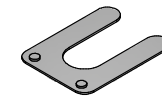
SCHNEIDER
Torsysteme



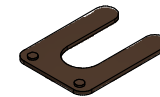
Falttor AL603EEF
Falttorantrieb 2+2
POWER-F innenliegend



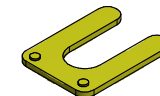
Montagebeilagen steckbar
aus Kunststoff belastbar bis 5500 kg



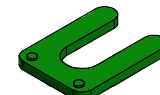
1 mm grau



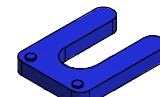
2 mm braun



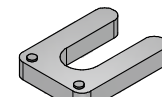
3 mm gelb



5 mm grün



8 mm blau

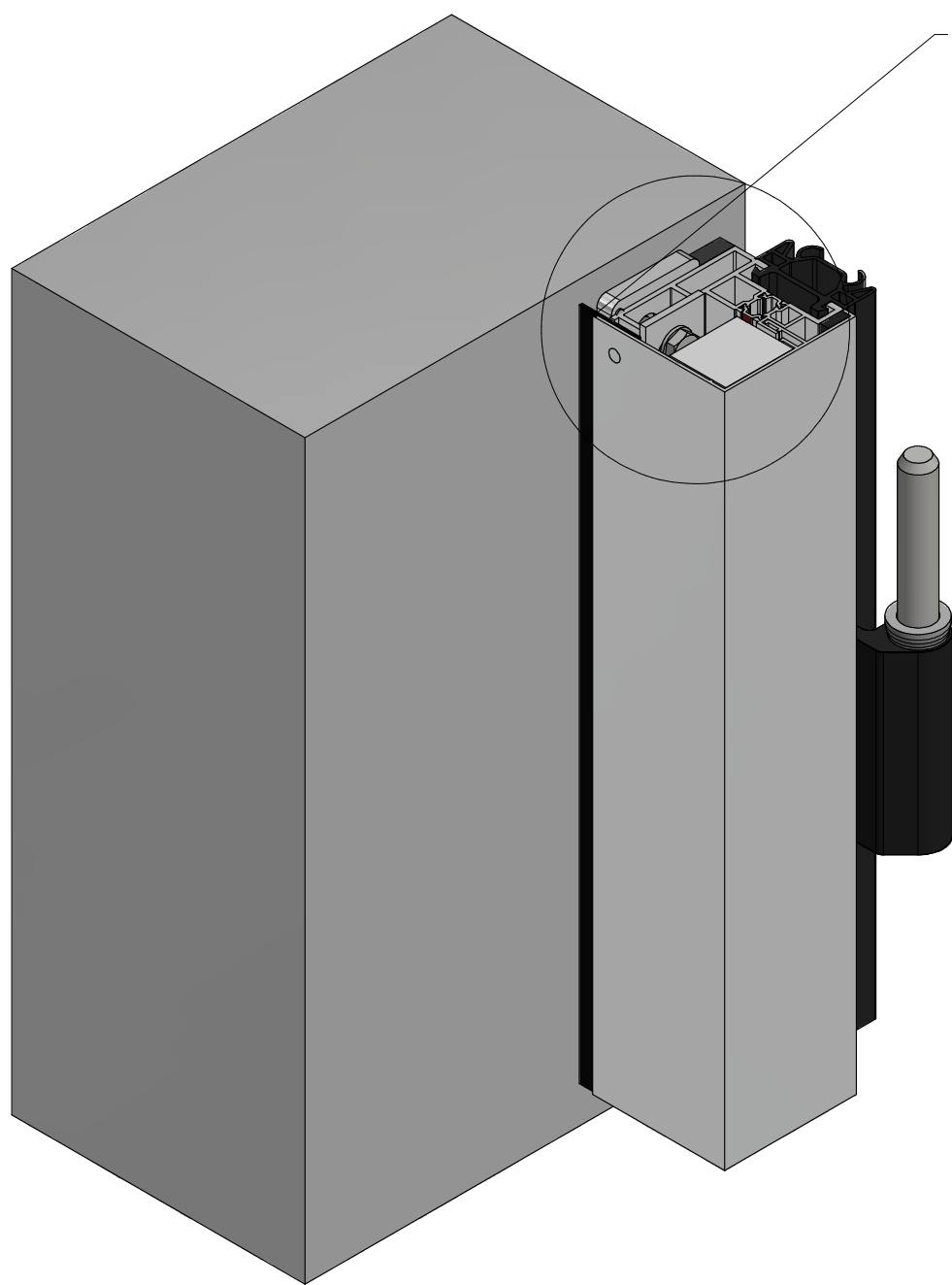


10 mm grau

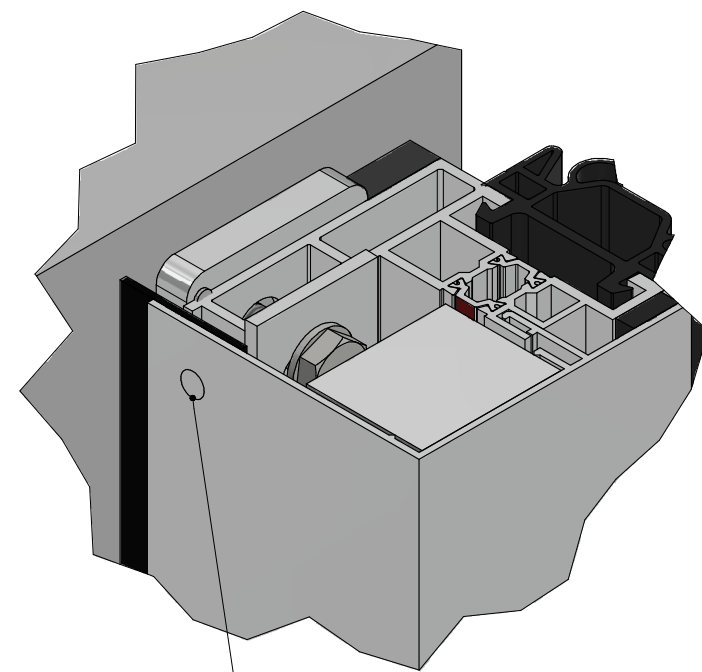
SCHNEIDER
Torsysteme



Falttor AL603EEF
Beilagen für Montage
vor/hinter der Leibung



Ausgleichstreifen bis 30mm Spalt
40x2x6000mm Hart PVC schwarz



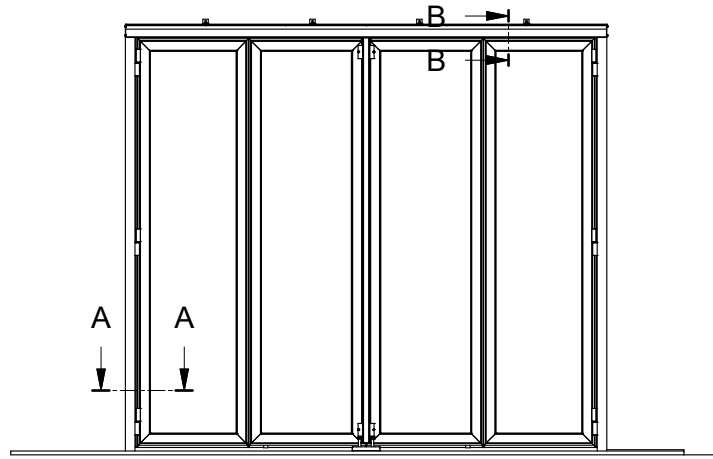
vernietet oder verklebt

SCHNEIDER
Torsysteme

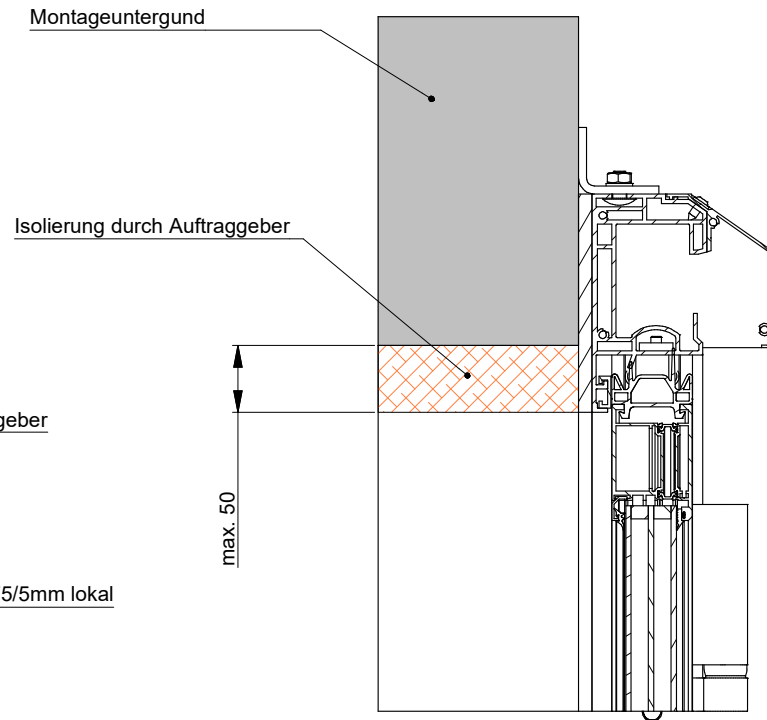


Falttor AL603EEF
Spaltausgleichsprofil
Montage vor/hinter der Leibung

B-B (1:4)



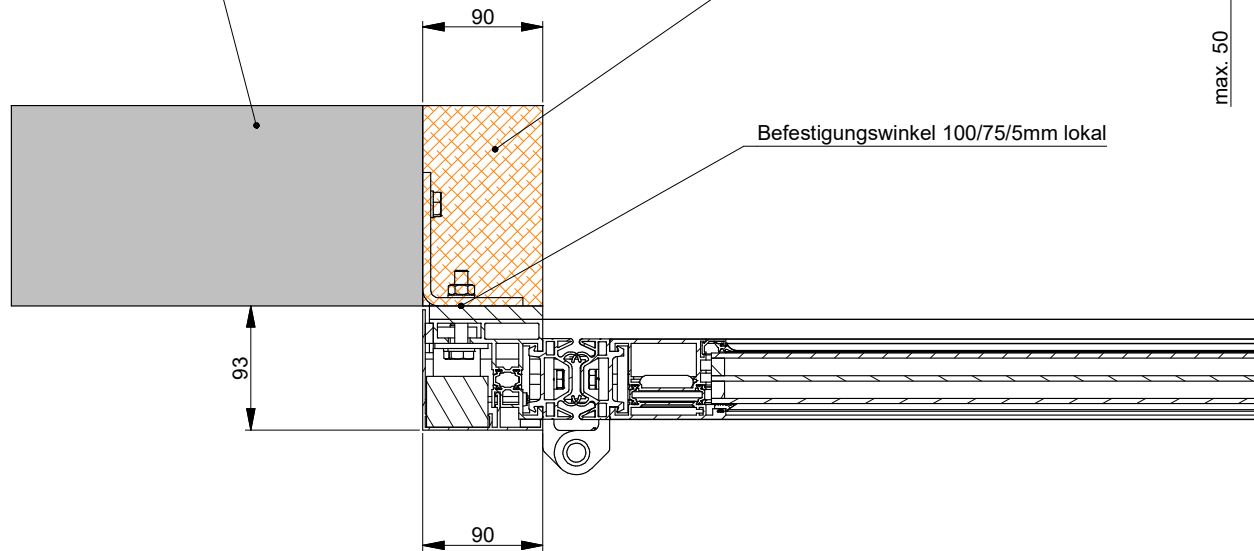
A-A (1 : 4)



Montageuntergund

Isolierung durch Auftraggeber

max. 50

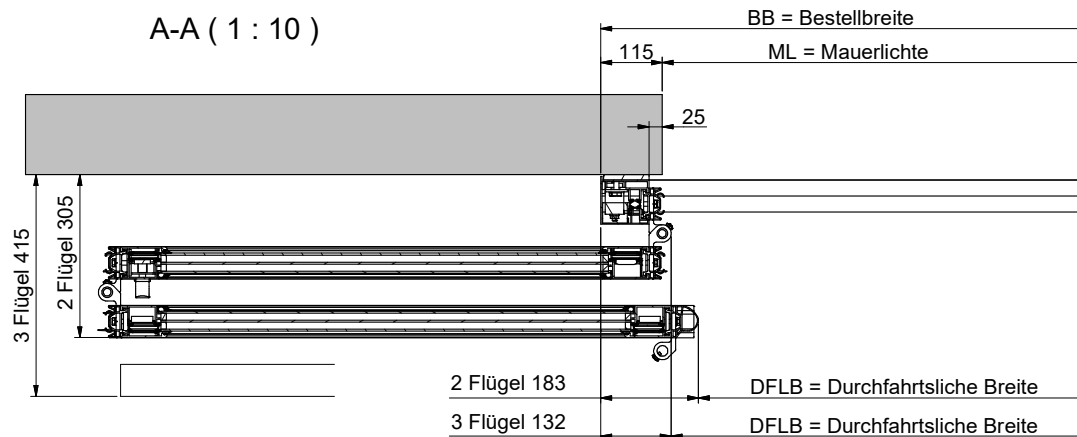
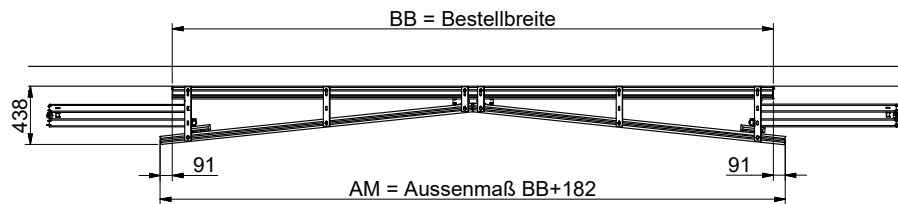
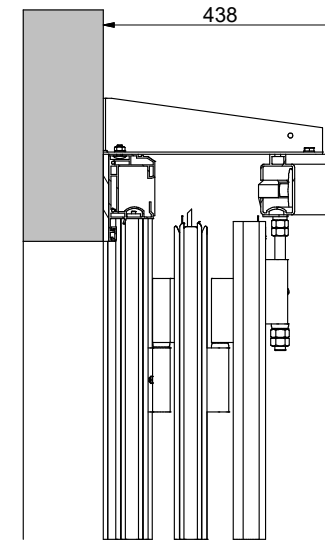
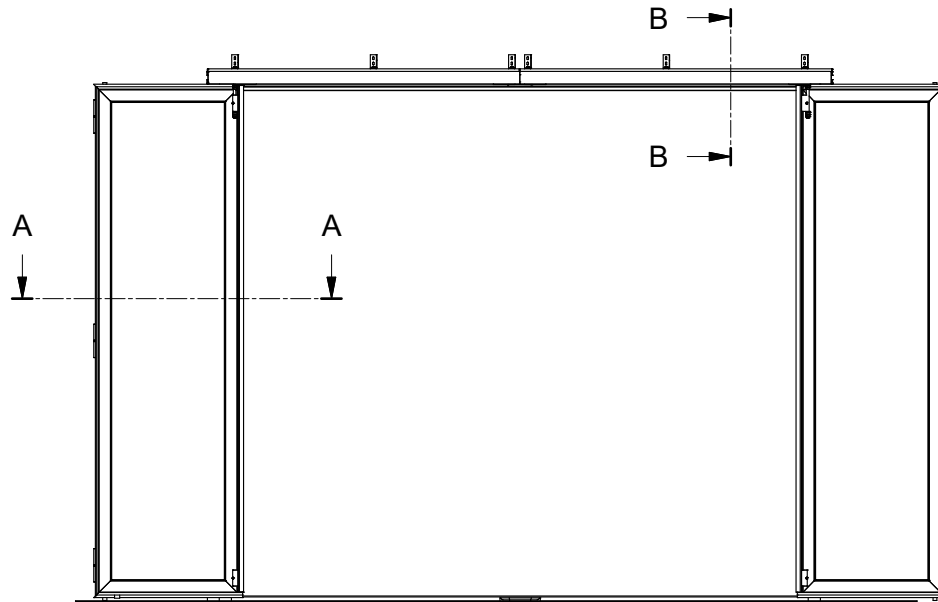


Befestigungswinkel 100/75/5mm lokal

SCHNEIDER
Torsysteme



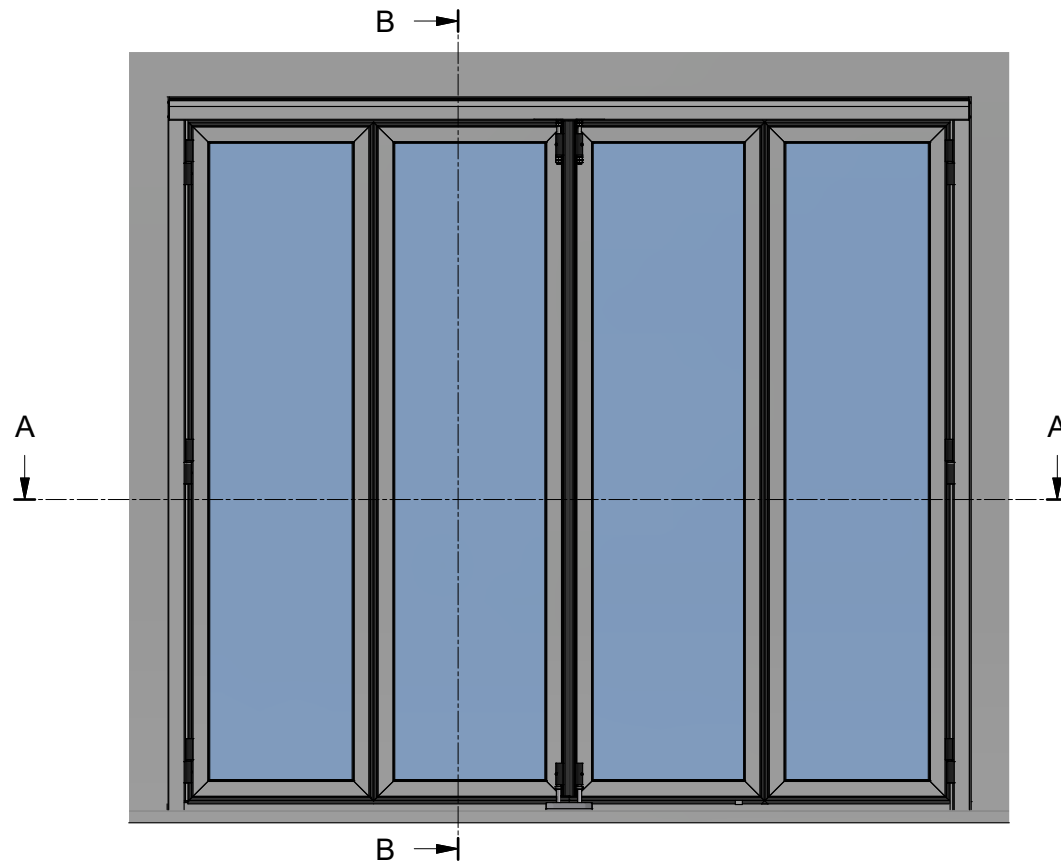
Falttor AL603EEF
Montage vor/hinter der Leibung
Montage mit isolierter Leibung
Übersicht 2+2



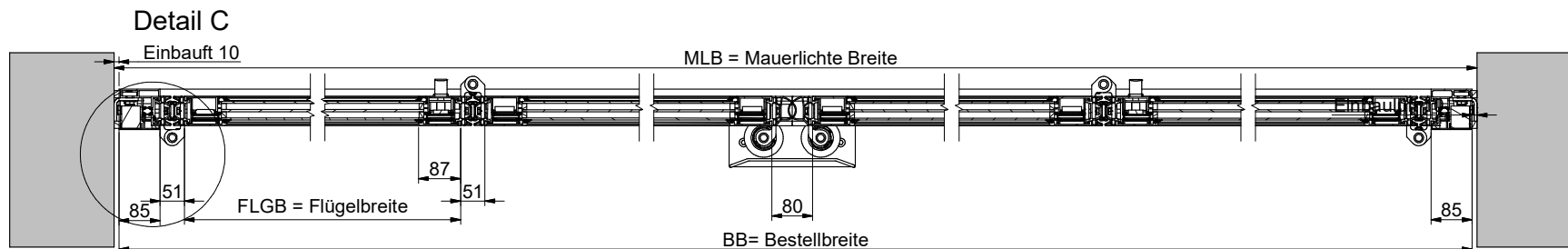
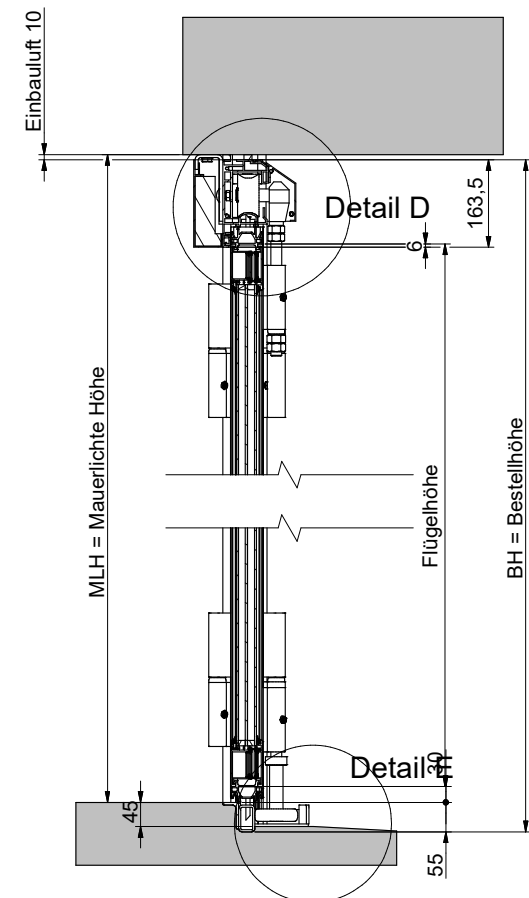
SCHNEIDER
Torsysteme



Falttor AL603EEF
Montage vor/hinter der Leibung
Laufschienenausführung
180/180 Grad



Schnitt A-A

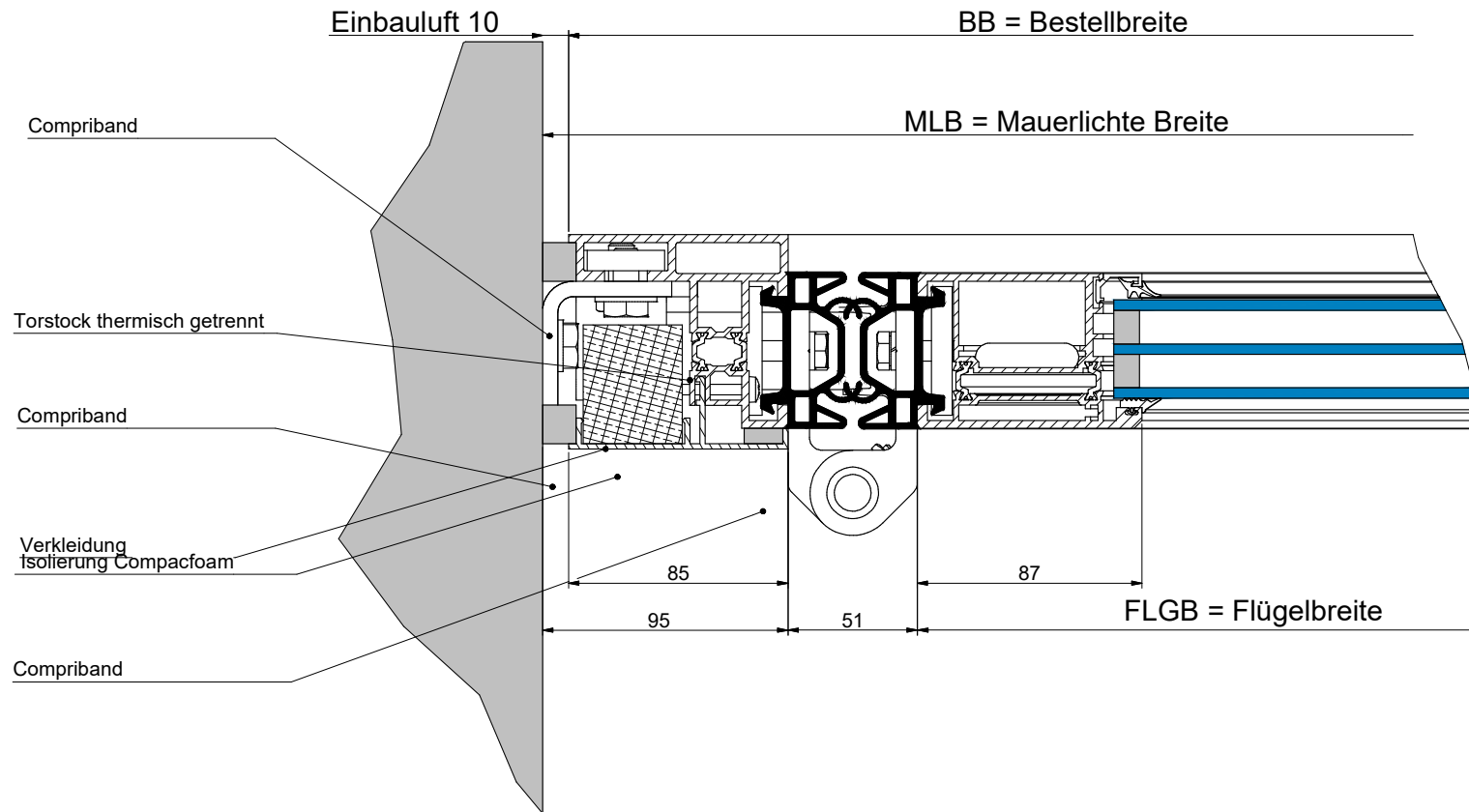


SCHNEIDER
Torsysteme



Falttor AL603EEF
Montage in der Leibung
Schwelle DA Bodenrolle D80mm
Übersicht 2+2

Detail C

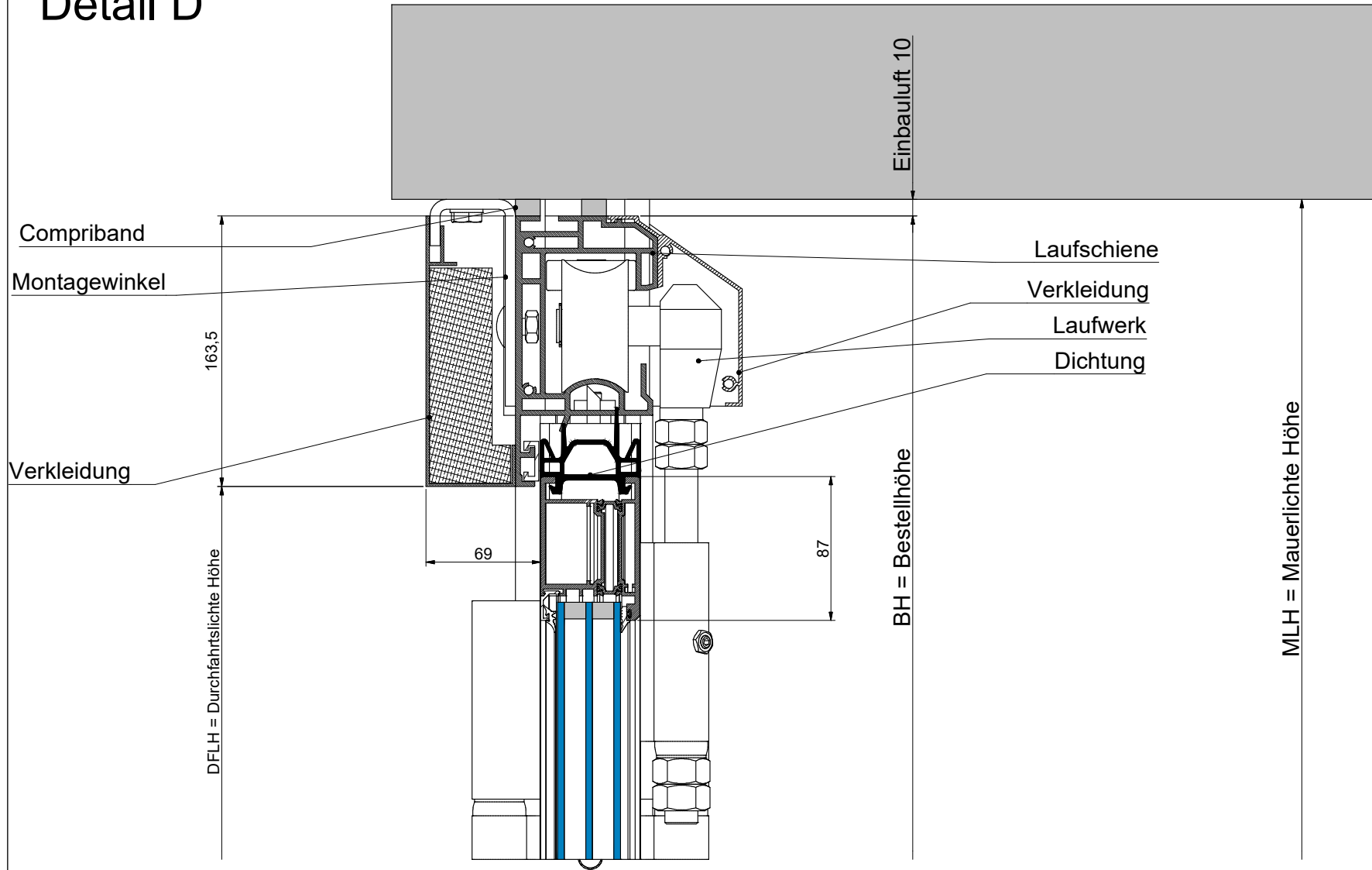


SCHNEIDER
Torsysteme

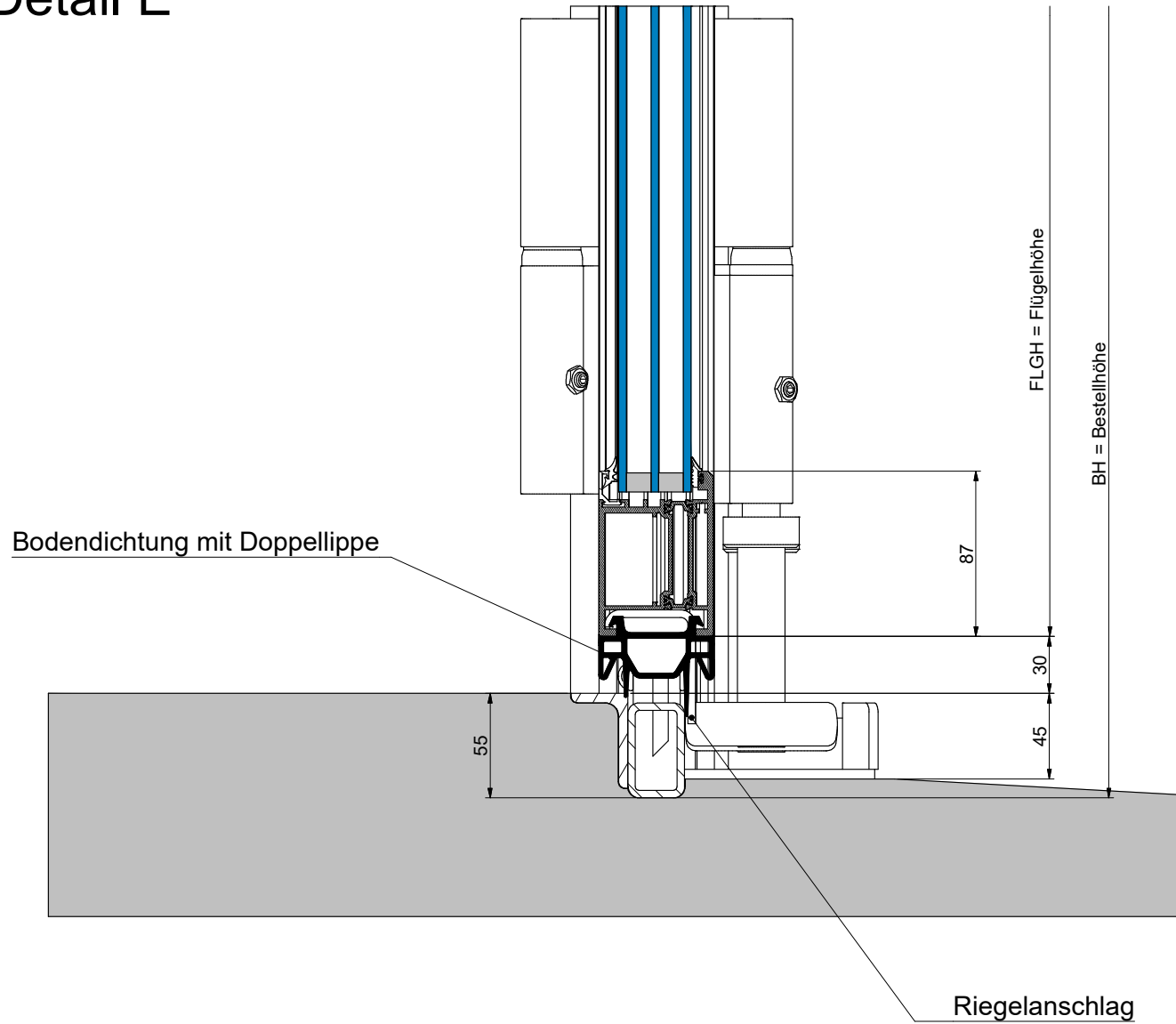


Faltdor AL603EEF
Montage in der Leibung
Torstock thermisch getrennt

Detail D



Detail E

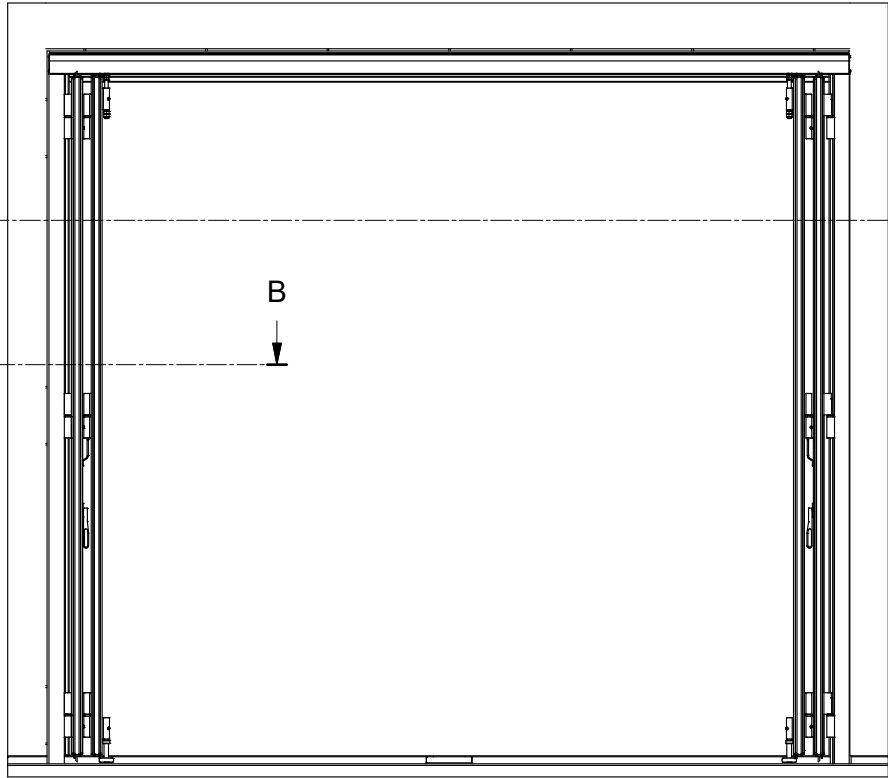
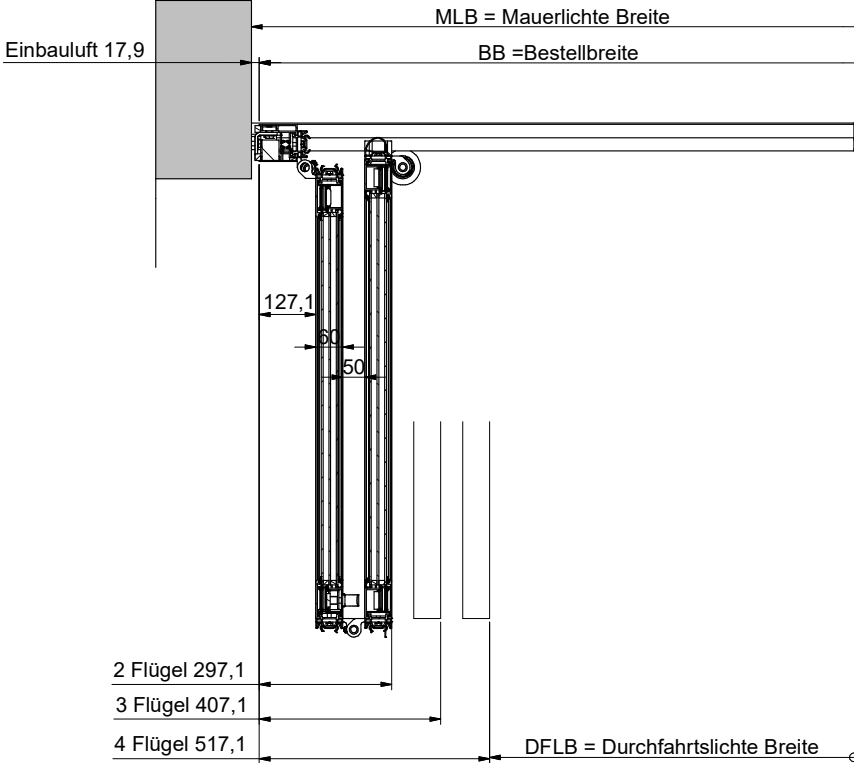


SCHNEIDER
Torsysteme



Falttor AL603EEF
Montage in der Leibung
Schwelle DA Bodenrolle D80mm

B-B (1 : 12)



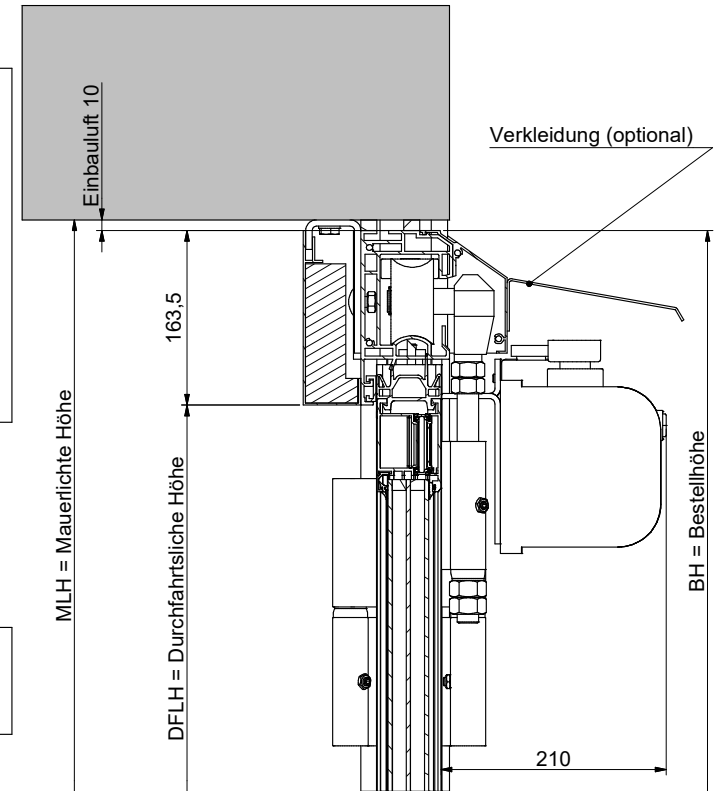
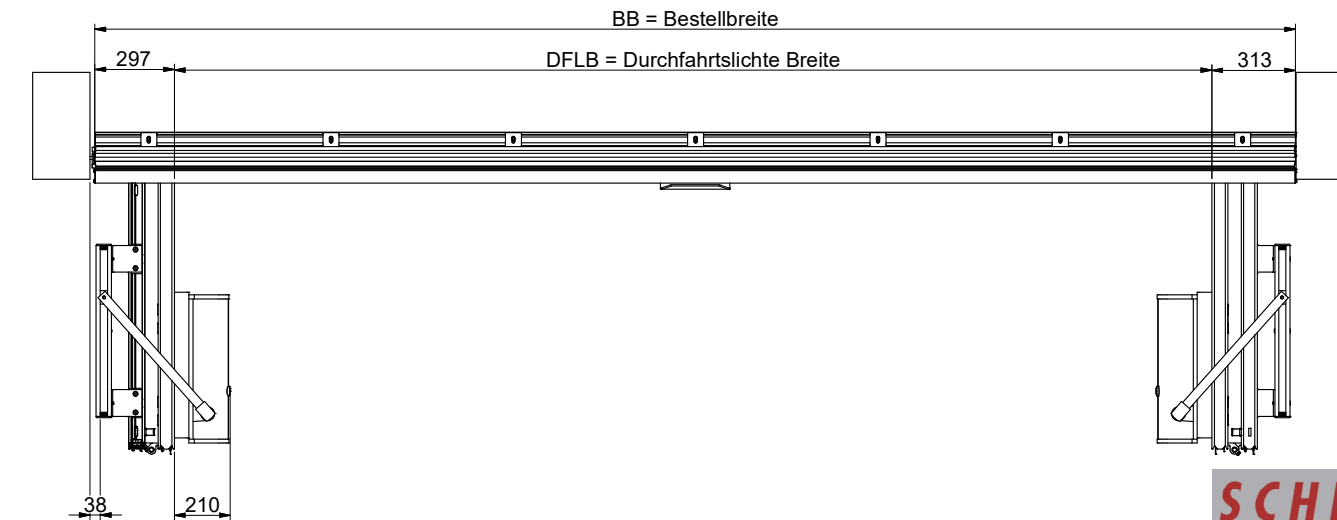
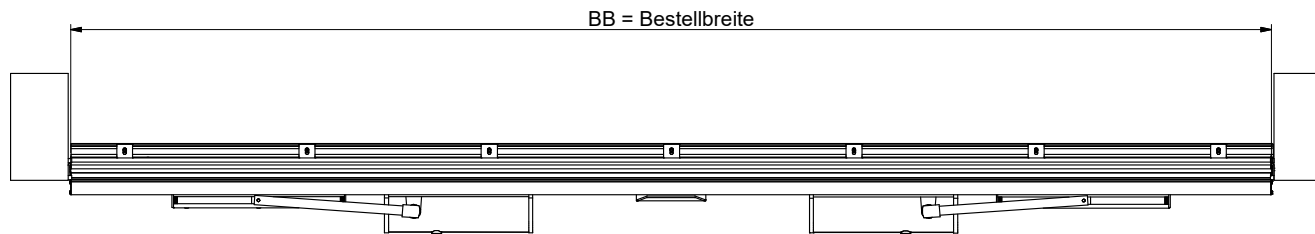
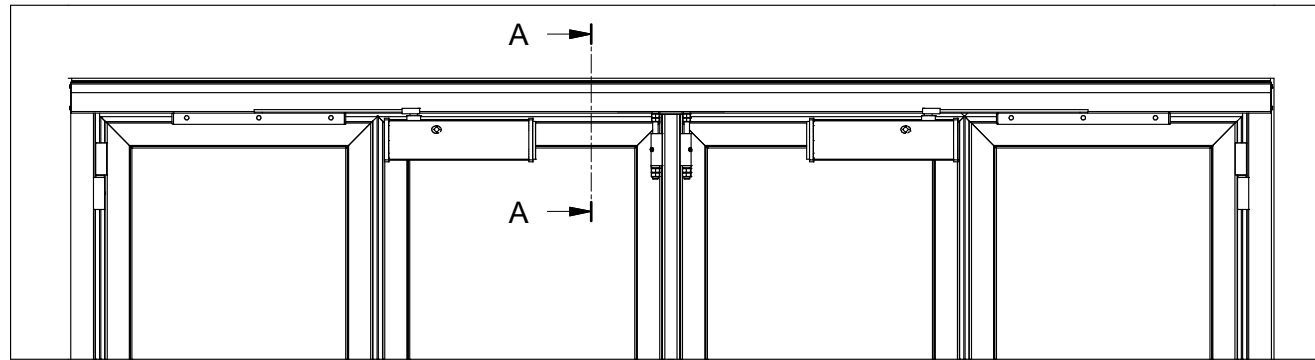
A-A (1 : 30)



Falttor AL603EEF
 Montage in der Leibung
 Laufschienenausführung
 90/90 Grad

Ansicht von außen

A-A (1 : 5)



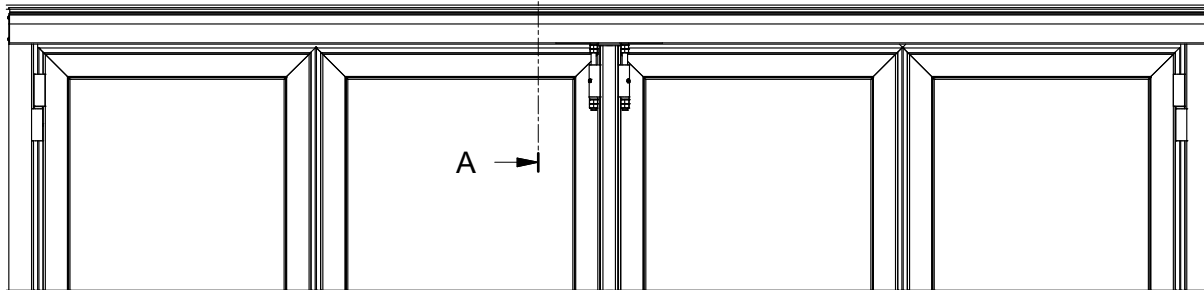
SCHNEIDER
Torsysteme



Falttor AL603EEF
Montage in der Leibung
BASIC/BASIC-TD

Ansicht von außen

A →



A →



BB = Bestellbreite

DFLB = Durchfahrtsliche Breite

307

307

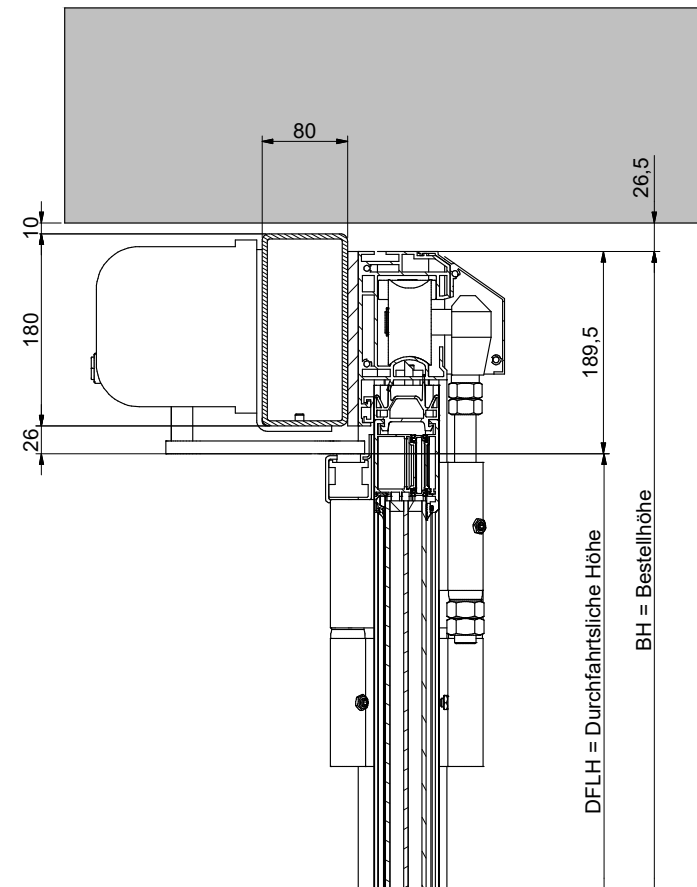
Motor

Gleitarm

Gleitschiene

97°

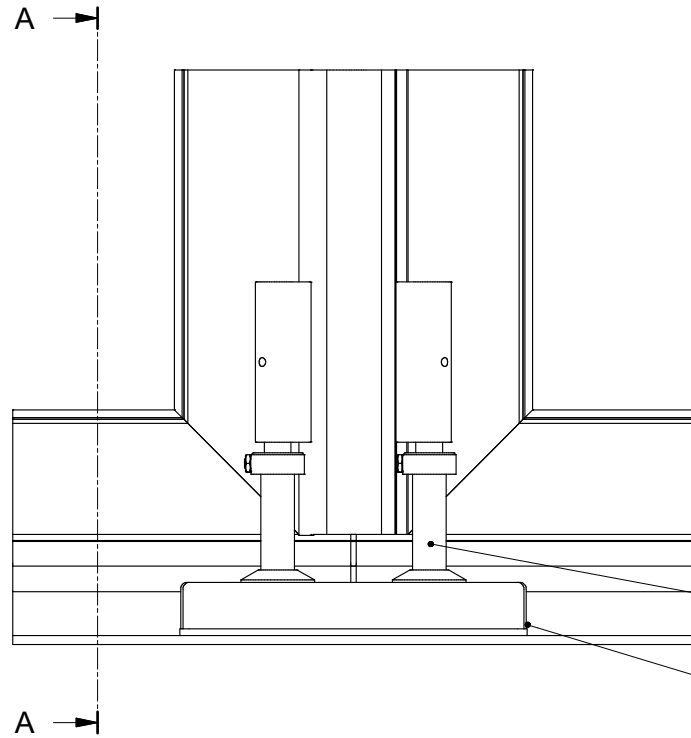
A-A (1:5)



SCHNEIDER
Torsysteme

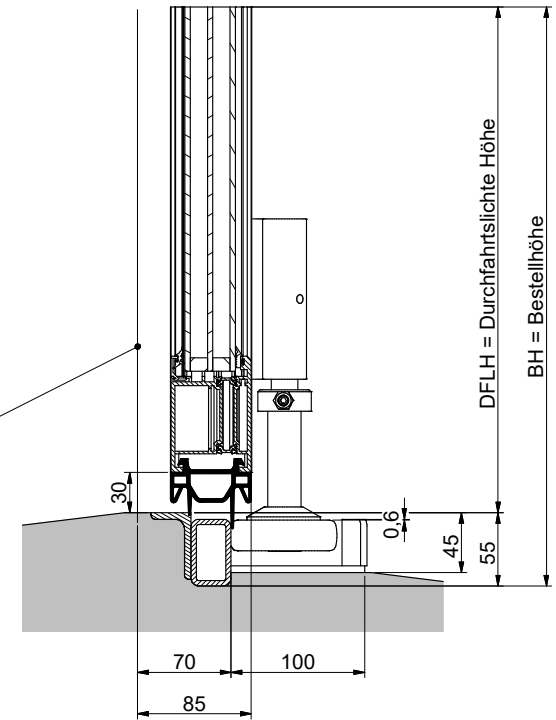


Falttor AL603EEF
Montage in der Leibung
BASIC/BASIC-TD
innenliegend

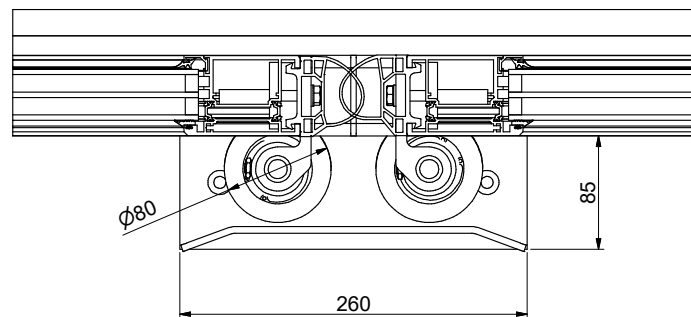


Leibungskante bei Montage
vor/ hinter der Leibung

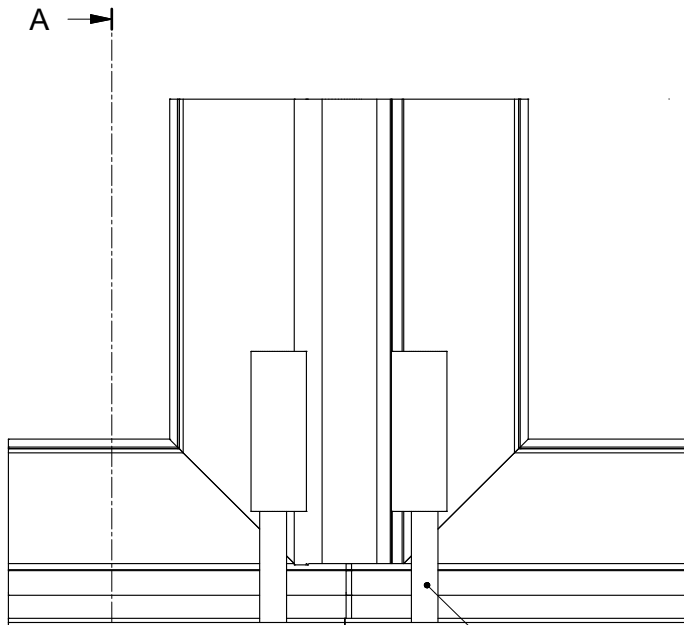
A-A (1 : 4)



5% Gefälle in Öffnungsrichtung

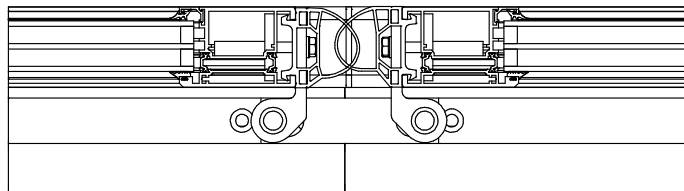


Falttor AL603EEF
Bodenabschluss
Schwelle DA Bodenrolle D80mm



Bodenrolle D32mm

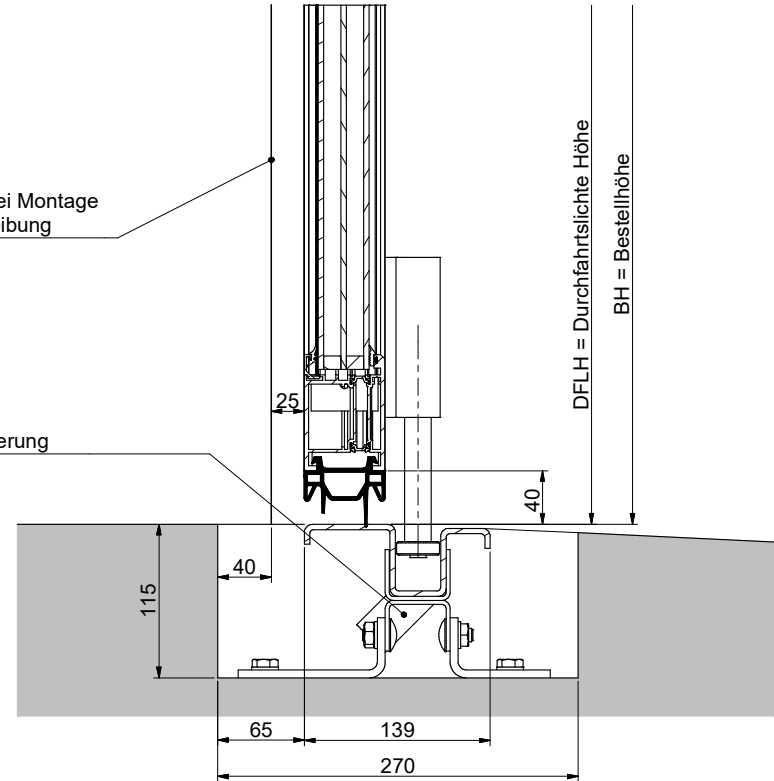
A →



A-A (1 : 4)

Leibungskante bei Montage
vor/ hinter der Leibung

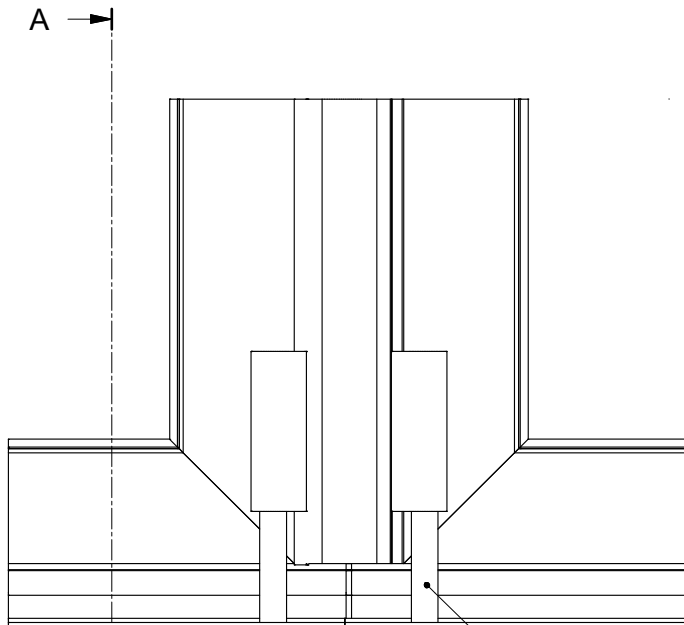
Entwässerung



SCHNEIDER
Torsysteme

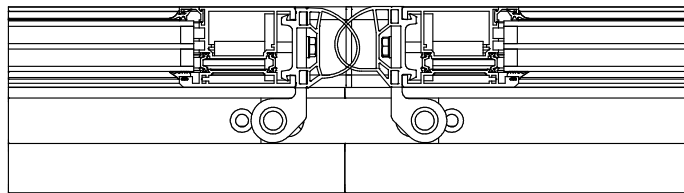


Falttor AL603EEF
Bodenabschluss
Bodenführung
BF-light NIRO



Bodenrolle D32mm

A →



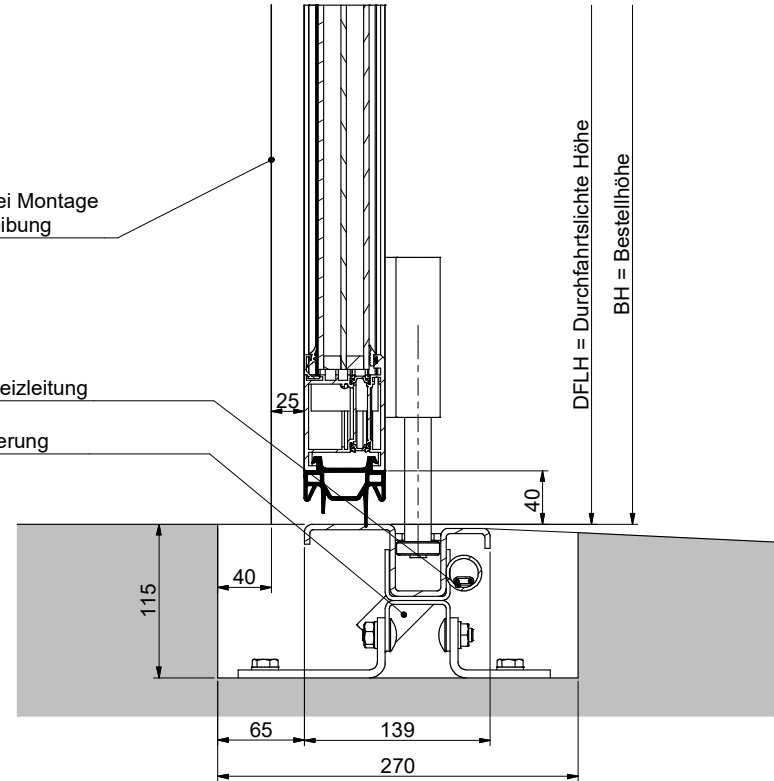
A-A (1 : 4)

Leibungskante bei Montage
vor/ hinter der Leibung

Heizleitung

Entwässerung

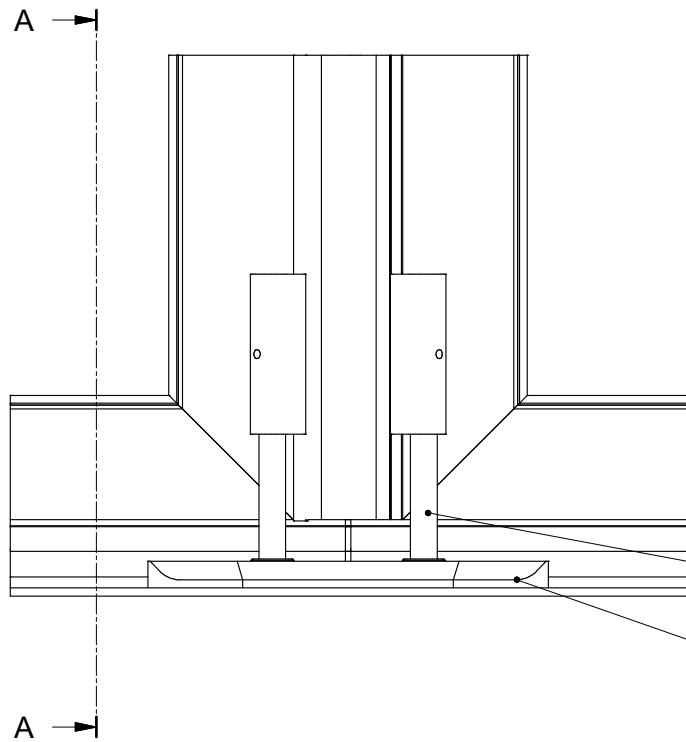
DFLH = Durchfahrtslichte Höhe
BH = Bestellhöhe



SCHNEIDER
Torsysteme



Faltdor AL603EEF
Bodenabschluss
Bodenführung
BF-light NIRO bhz.

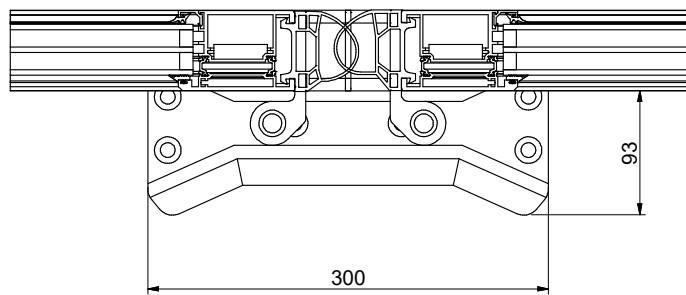
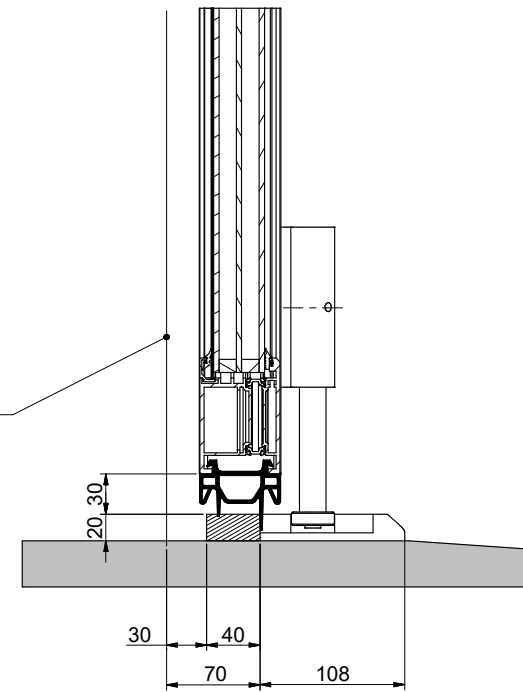


Bodenrolle D32mm

lokaler Einlauf

Leibungskante bei Montage
vor/ hinter der Leibung

A-A (1 : 4)



SCHNEIDER
Torsysteme



Faltdor AL603EEF
Bodenabschluss
Schwelle S20D